

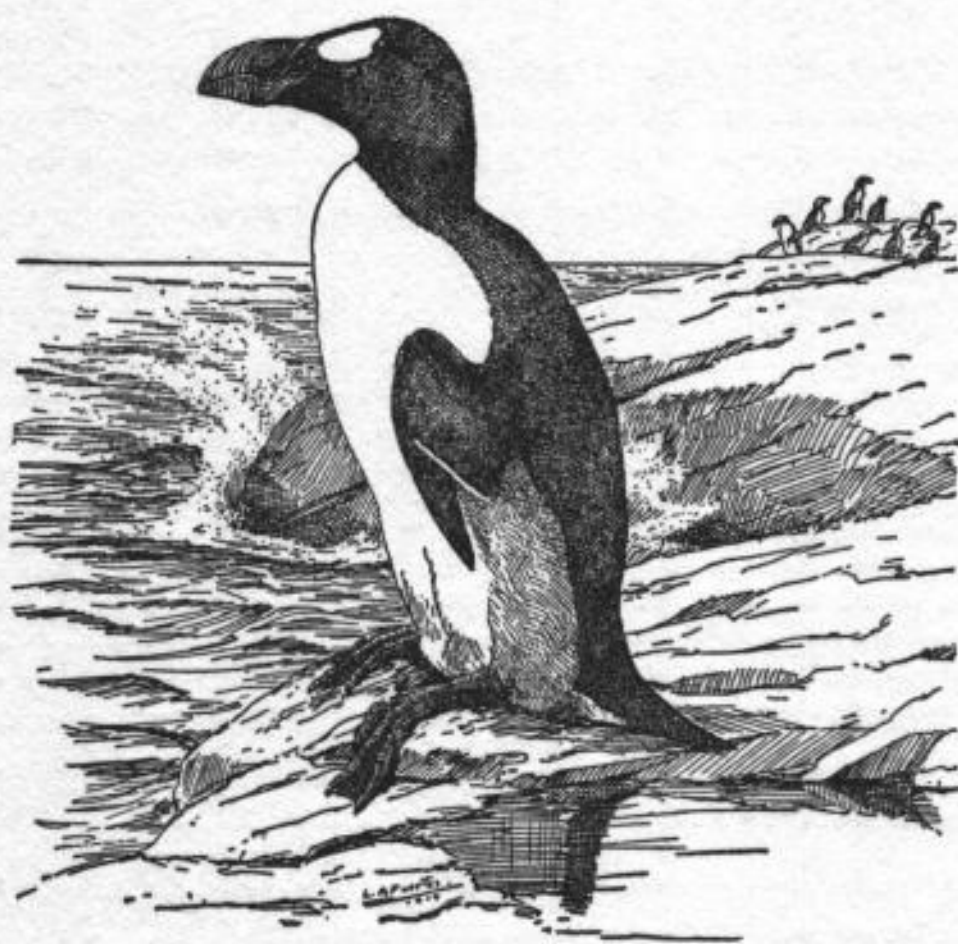
The Auk

A Quarterly Journal of Ornithology

Vol. 72

APRIL, 1955

No. 2



PUBLISHED BY

The American Ornithologists' Union

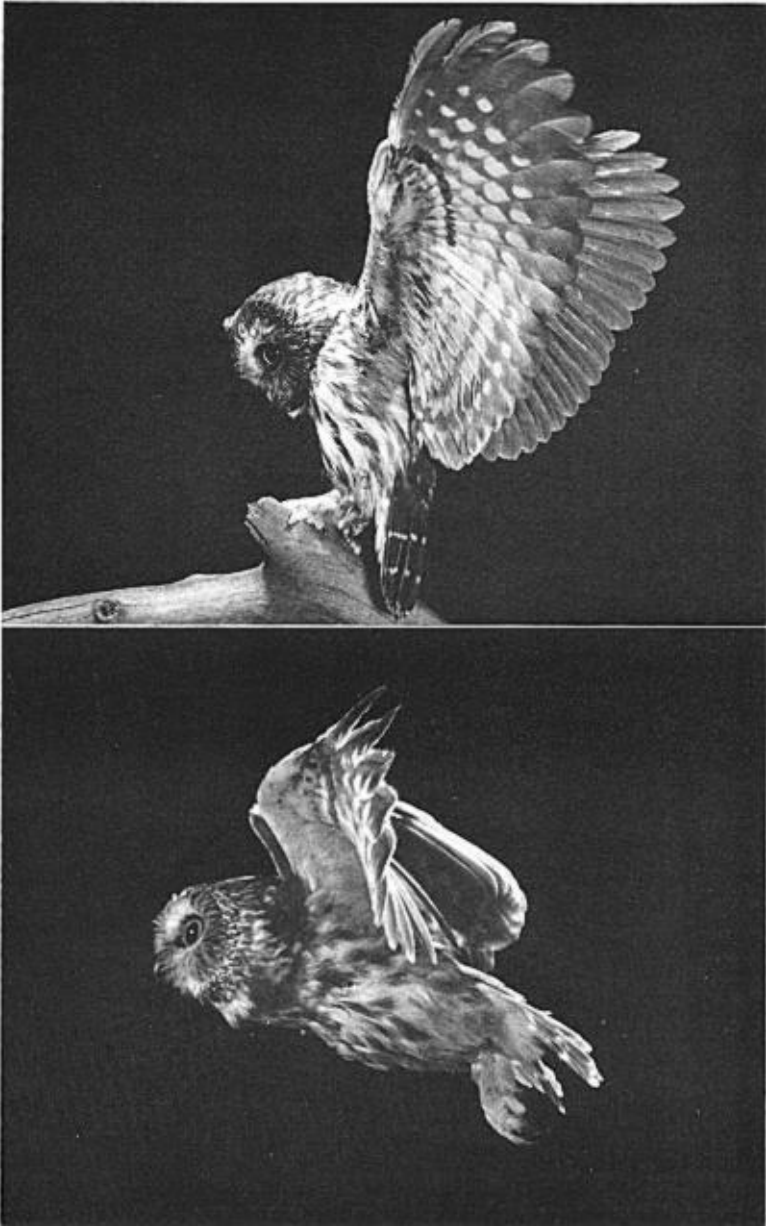
CONTENTS

SAW-WHET OWL. Photographed by <i>Robert C. Hermes</i>	Frontispiece
NATURAL HISTORY AND BREEDING BEHAVIOR OF THE TINAMOU, <i>Nothoprocta ornata</i> . By <i>Anita K. and Oliver P. Pearson</i>	113
MEASUREMENT OF TERRITORY AND HOME RANGE SIZE IN BIRDS. By <i>Eugene P. Odum and Edward J. Kuenzler</i>	128
SUMMER ECOLOGY OF OCEANIC BIRDS OFF SOUTHERN NEW ENGLAND. By <i>Malcolm S. Gordon</i>	138
NOTES ON THE LIFE HISTORY OF TRAILL'S FLYCATCHER (<i>Empidonax traillii</i>) IN SOUTHEASTERN WASHINGTON. By <i>James R. King</i>	148
FURTHER NOTES ON BIRDS OF THE LAKE PATZCUARO REGION, MEXICO. By <i>Ernest P. Edwards and Paul S. Martin</i>	174
IN MEMORIAM: FRANCIS HENRY ALLEN. By <i>Wendell Taber</i>	179
VARIATION OF SHAPE IN THE EGGS OF THE COMMON TERN IN THE CLUTCH-SEQUENCE. By <i>Mary E. Gemperle and F. W. Preston</i>	184
REMARKS ON THE PIGEON, <i>Otidiphaps nobilis</i> GOULD. By <i>Fred H. Glenny and Dean Amadon</i>	199
NOTES AND NEWS	203
GENERAL NOTES	
Feeding Habits of the Everglade Kite (<i>Rostrhamus sociabilis</i>). By <i>Robert Cushman Murphy</i>	204
Possible Function of the Flicker's Black Breast Crescent. By <i>Hervey Brackbill</i>	205
Status of the Black-pollled, Bay-breasted, and Connecticut Warblers in Middle America. By <i>Eugene Eisenmann</i>	206
The Type Locality of the Florida Sandhill Crane. By <i>Pierce Brodtkorb</i>	207
A Gull New to North America. By <i>Burt L. Monroe, Jr.</i>	208
Eastern Willet in Ohio. By <i>Worth Randle and Emerson Kemsies</i>	208
A New Race of Least Bittern from Peru. By <i>James Bond</i>	208
Philippine Bird Names of Blasius. By <i>A. L. Rand</i>	210
Is the Starling Moving into Southern Florida? By <i>Alexander Sprunt, Jr.</i>	212
TREASURER'S REPORT	213
STUDENT MEMBERSHIP AWARDS	215
REVIEWS	216
RECENT LITERATURE. Edited by <i>Frank McKinney</i>	219

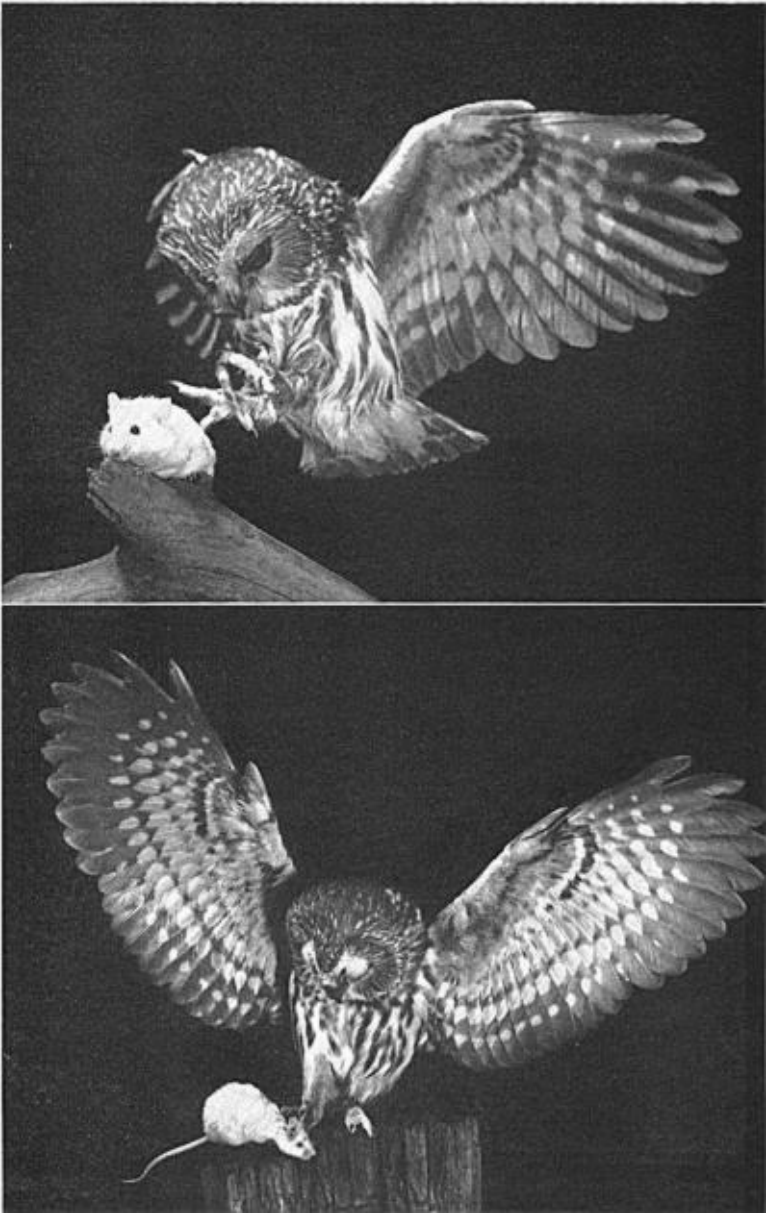
Printed by The Intelligencer Printing Company
Lancaster, Pa.

Entered as second-class mail matter in the Post Office at Lancaster, Pa.,
May 15, 1920, under the Act of August 24, 1912

Accepted for mailing at special rate of postage provided for in the Act of October 3, 1917, embodied in paragraph (d)—(2) of Section 34.40, P. L. and R., of 1948, authorized May 15, 1920.



SAW-WHET OWL (*Aegolius acadicus*) IN ACTION. (Top) with wings spread, the bird watches, ready to fly down for a mouse. (Bottom) In flight. These pictures and those on the following plate were taken indoors by Robert C. Hermes.



SAW-WHET OWL IN ACTION. (*Top*) Photographed just an instant before it touched a mouse, its talons fully spread and its eyes wide open. (*Bottom*) Immediately after striking a mouse. The impact of the blow has raised the rear of the mouse. The eyes of the bird are closed when it strikes.