

Figure 19. Map of all active raptor nests in the vicinity of Bridge Blvd., 2004-2016, Albuquerque study area.

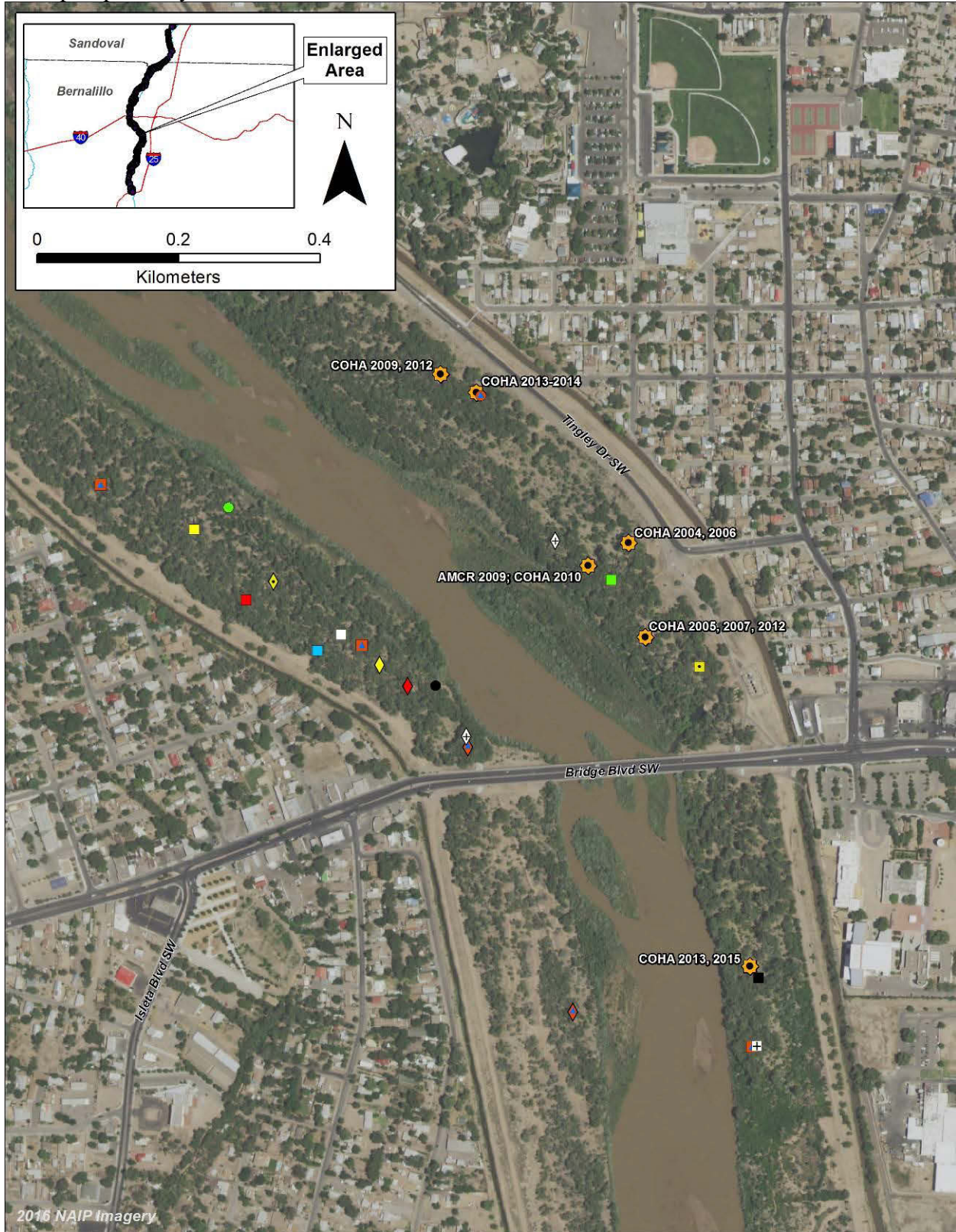


Figure 20. Map of all active raptor nests south of Bridge Blvd., 2004-2016, Albuquerque study area.

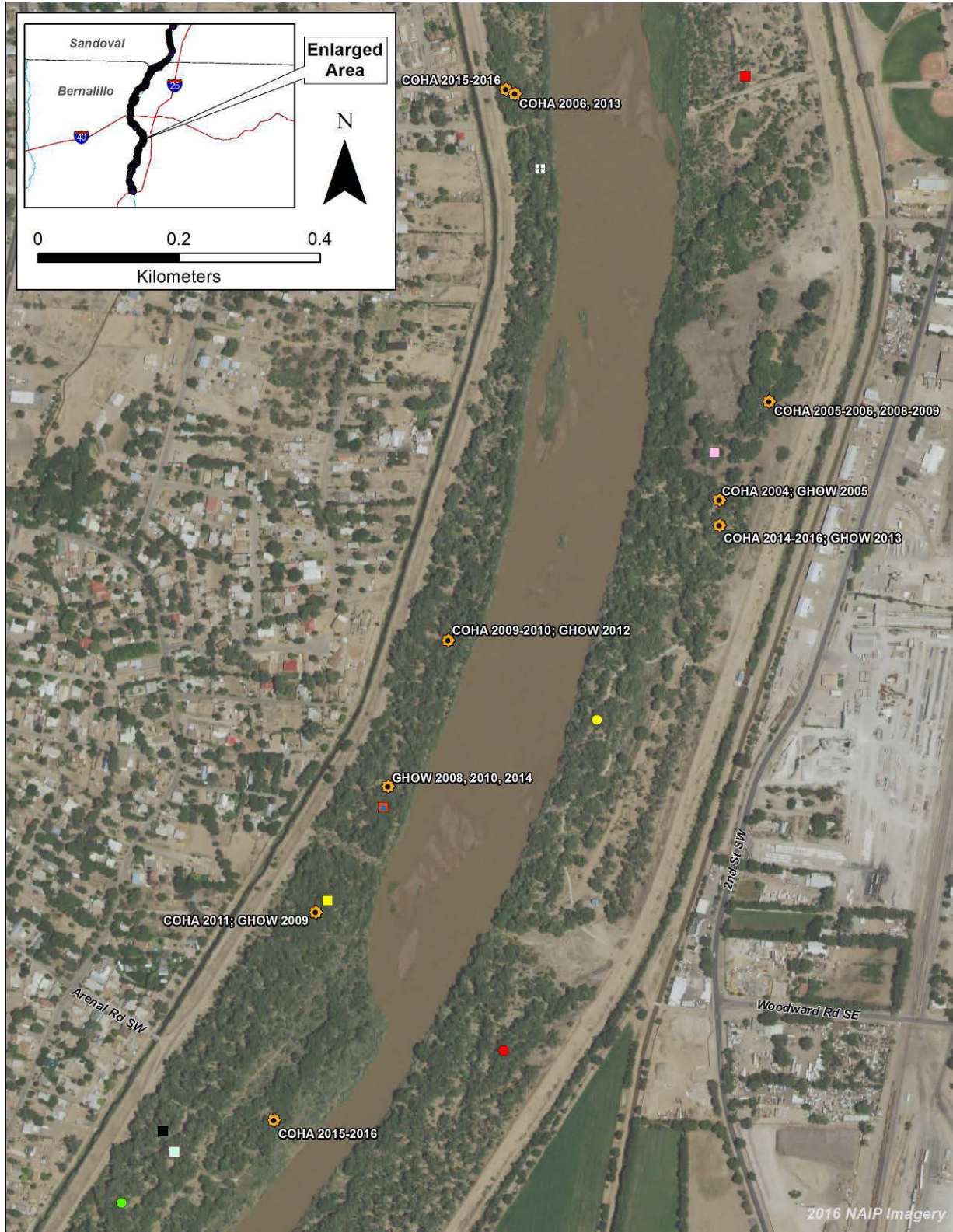


Figure 21. Map of all active raptor nests north of Rio Bravo Blvd., 2004-2016, Albuquerque study area.

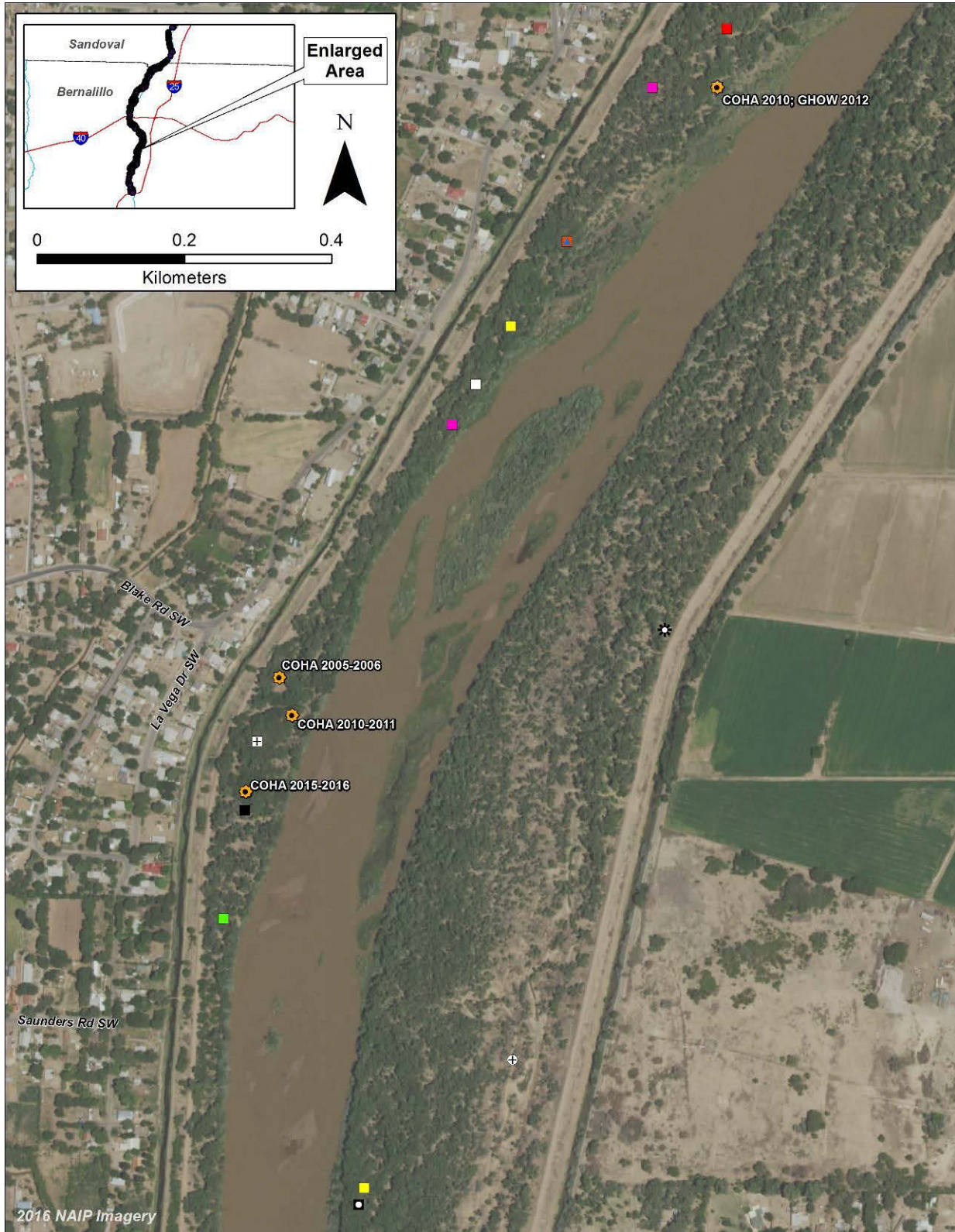


Figure 22. Map of all active raptor nests south of Rio Bravo Blvd., 2004-2016, Albuquerque study area.

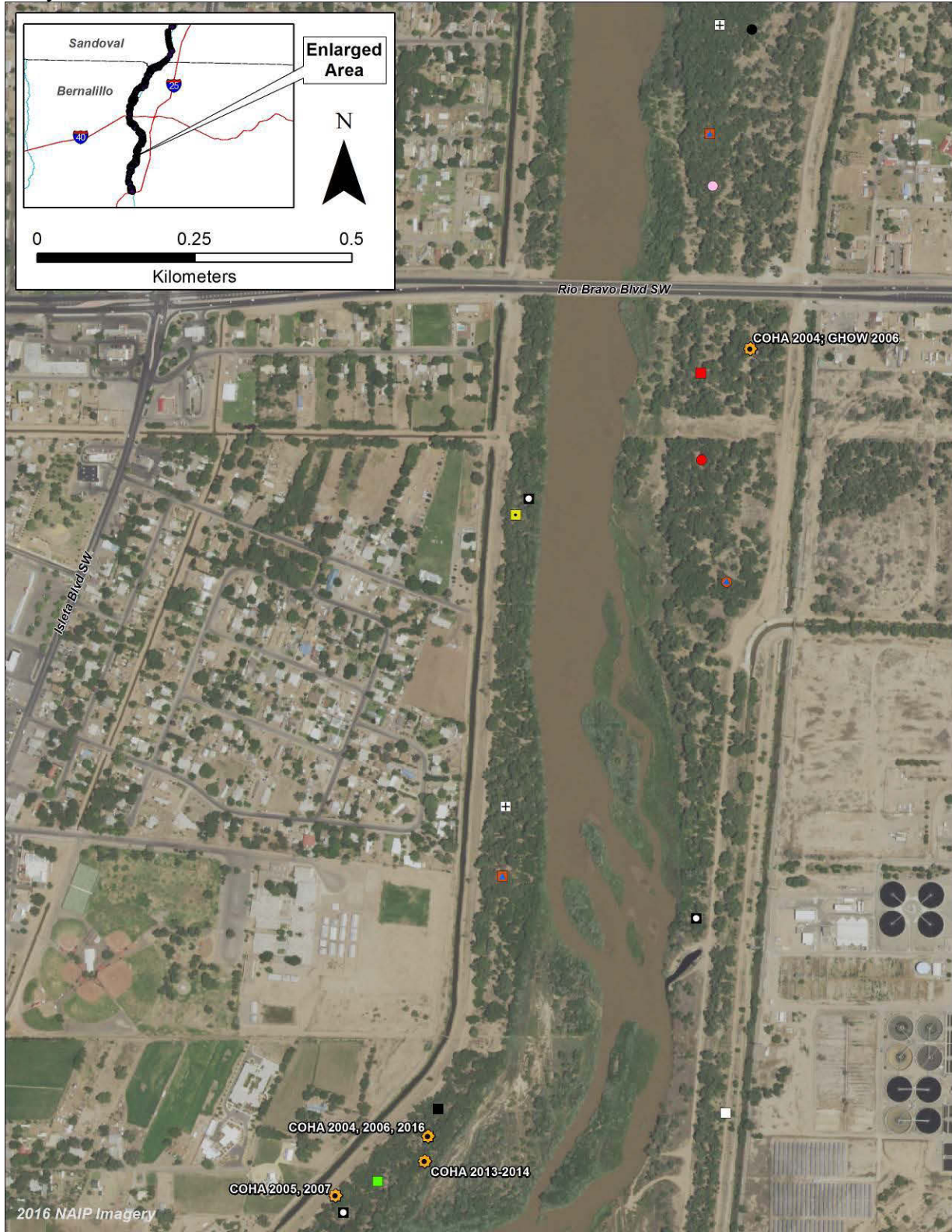


Figure 23. Map of all active raptor nests in the South Valley near Durand Open Space, 2004-2016, Albuquerque study area.

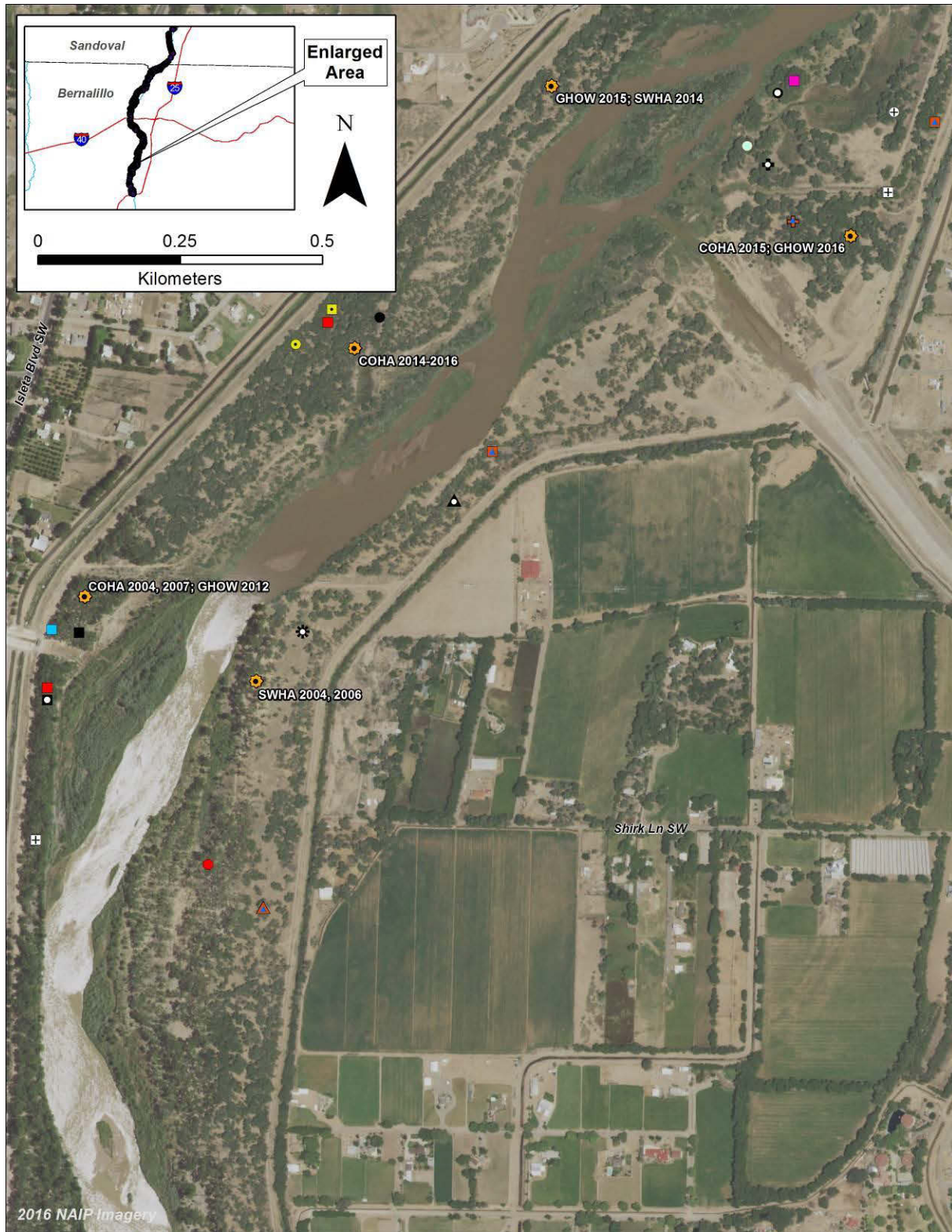


Figure 24. Map of all active raptor nests in the South Valley near Louise Rd., 2004-2016, Albuquerque study area.

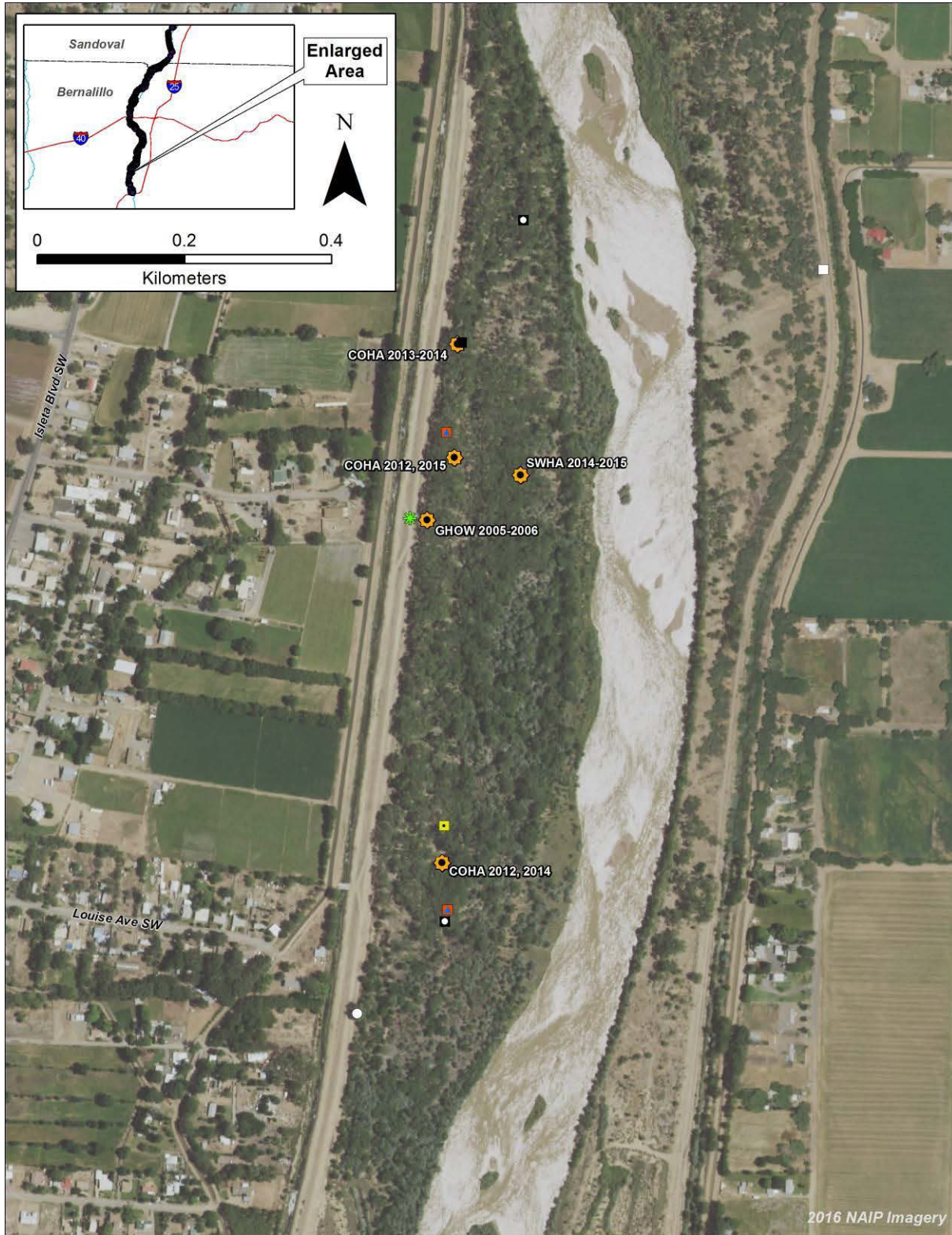


Figure 25. Map of all active raptor nests in the South Valley near Turrietta Ln., 2004-2016, Albuquerque study area.

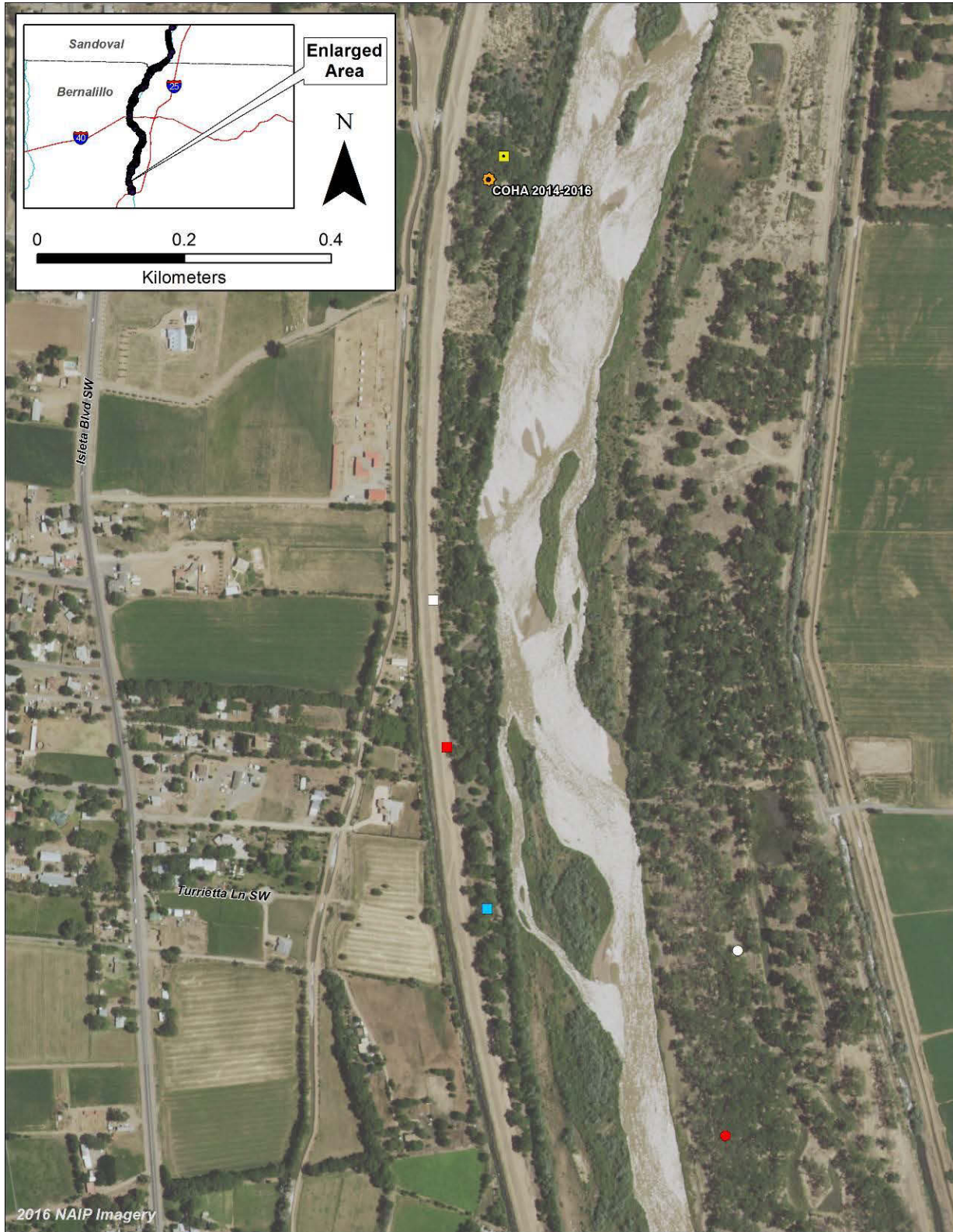


Figure 26. Map of all active raptor nests north of the I-25 Bridge, 2004-2016, Albuquerque study area.

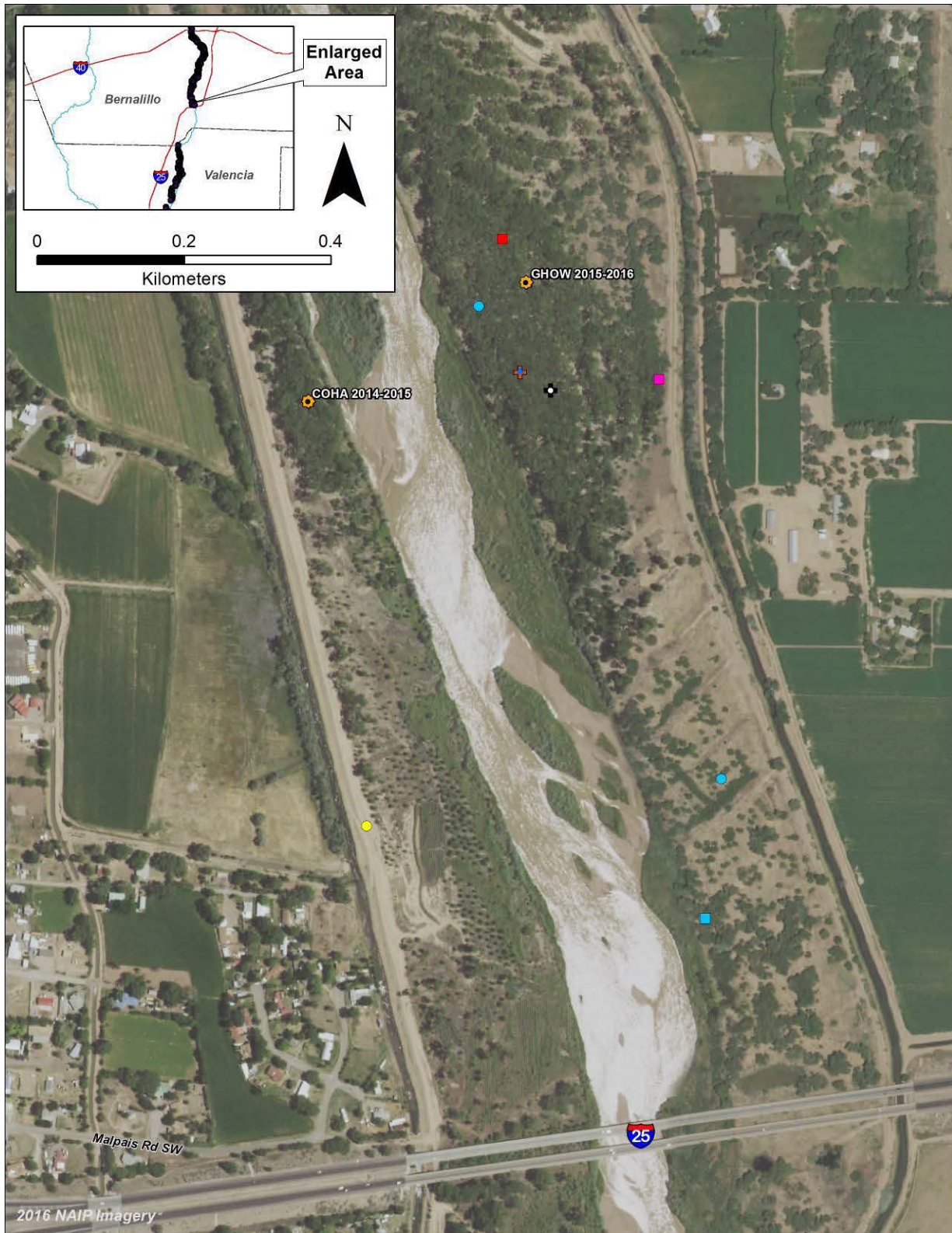




Figure 27. Map of all active raptor nests in north Bosque Farms, 2004-2016, Middle Rio Grande Conservancy District study area.

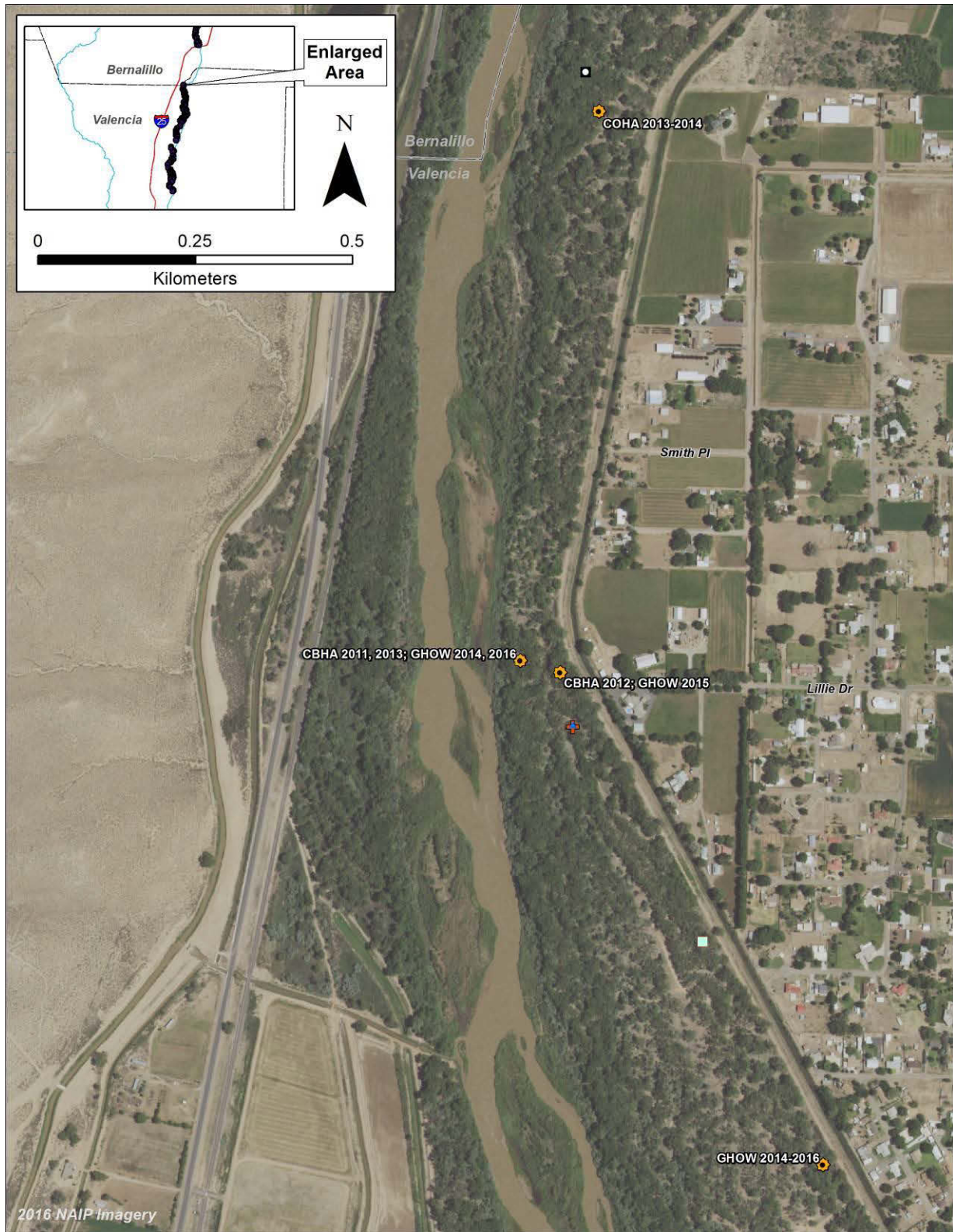


Figure 28. Map of all active raptor nests in south Bosque Farms, 2004-2016, Middle Rio Grande Conservancy District study area.



Figure 29. Map of all active raptor nests near Peralta, 2004-2016, Middle Rio Grande Conservancy District study area.

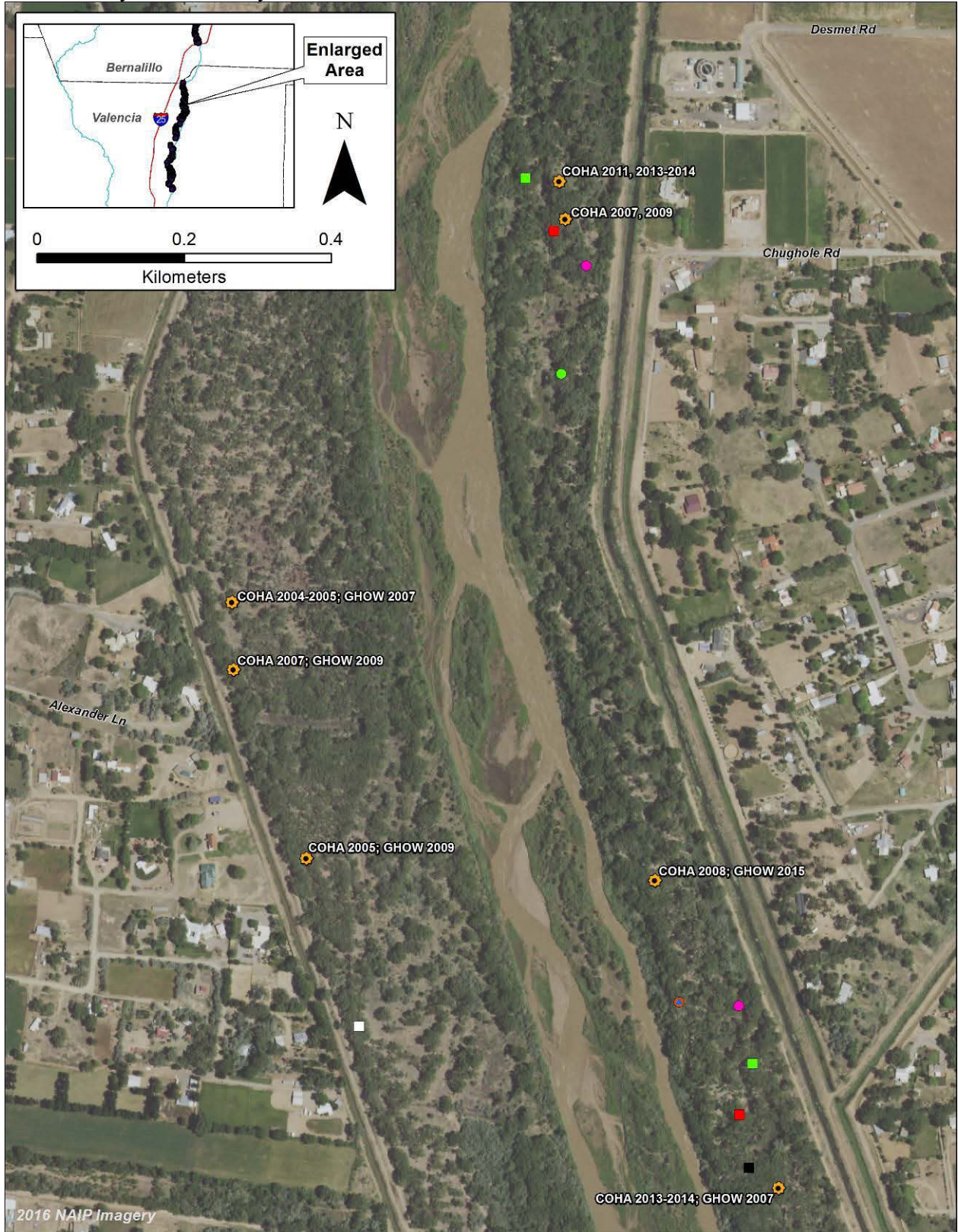


Figure 30. Map of all active raptor nests near the Los Lunas Bridge, 2004-2016, Middle Rio Grande Conservancy District study area.

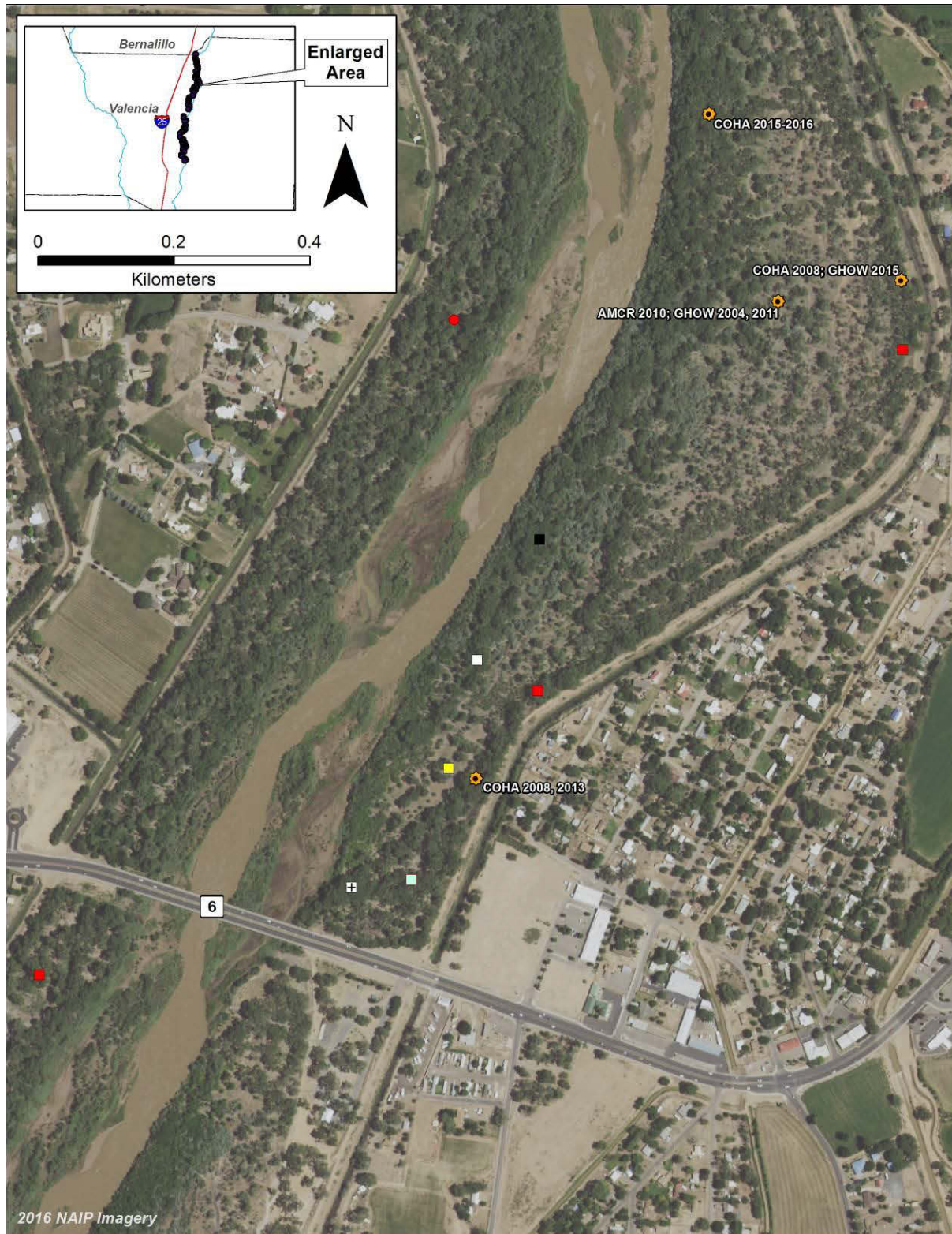


Figure 31. Map of all active raptor nests near south Los Lunas, 2004-2016, Middle Rio Grande Conservancy District study area.

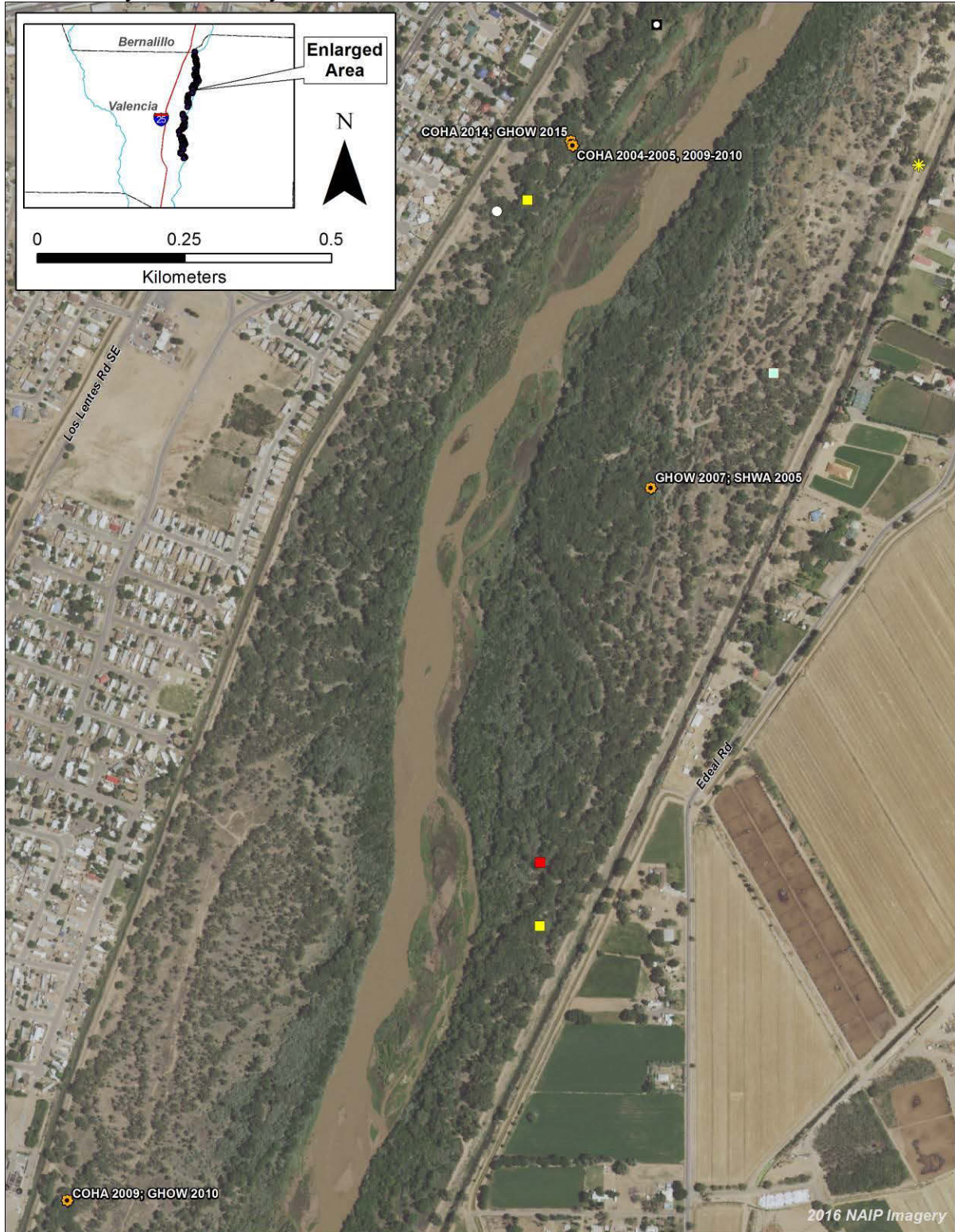


Figure 32. Map of all active raptor nests near Tome, 2004-2016, Middle Rio Grande Conservancy District study area.

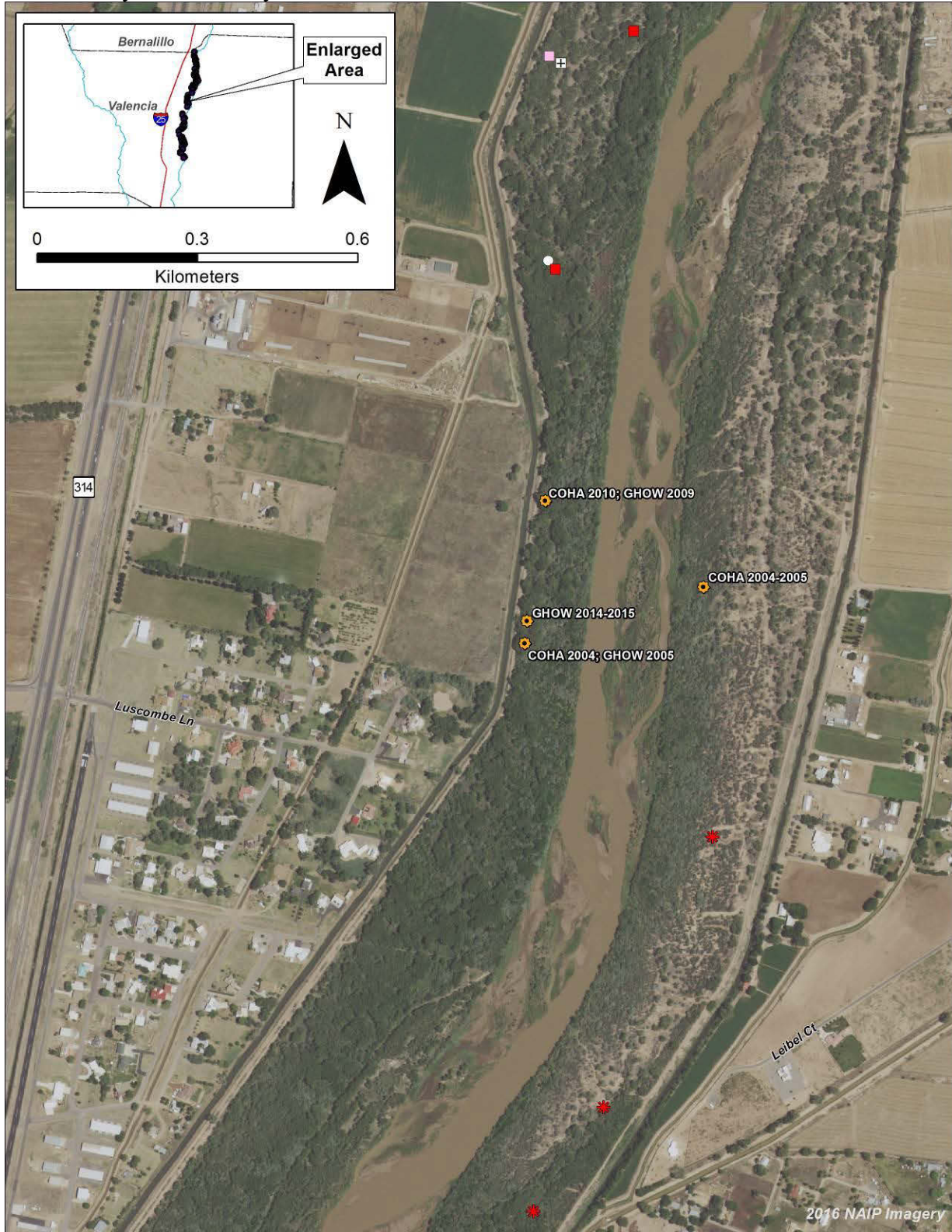


Figure 33. Map of all active raptor nests near Los Chavez, 2004-2016, Middle Rio Grande Conservancy District study area.

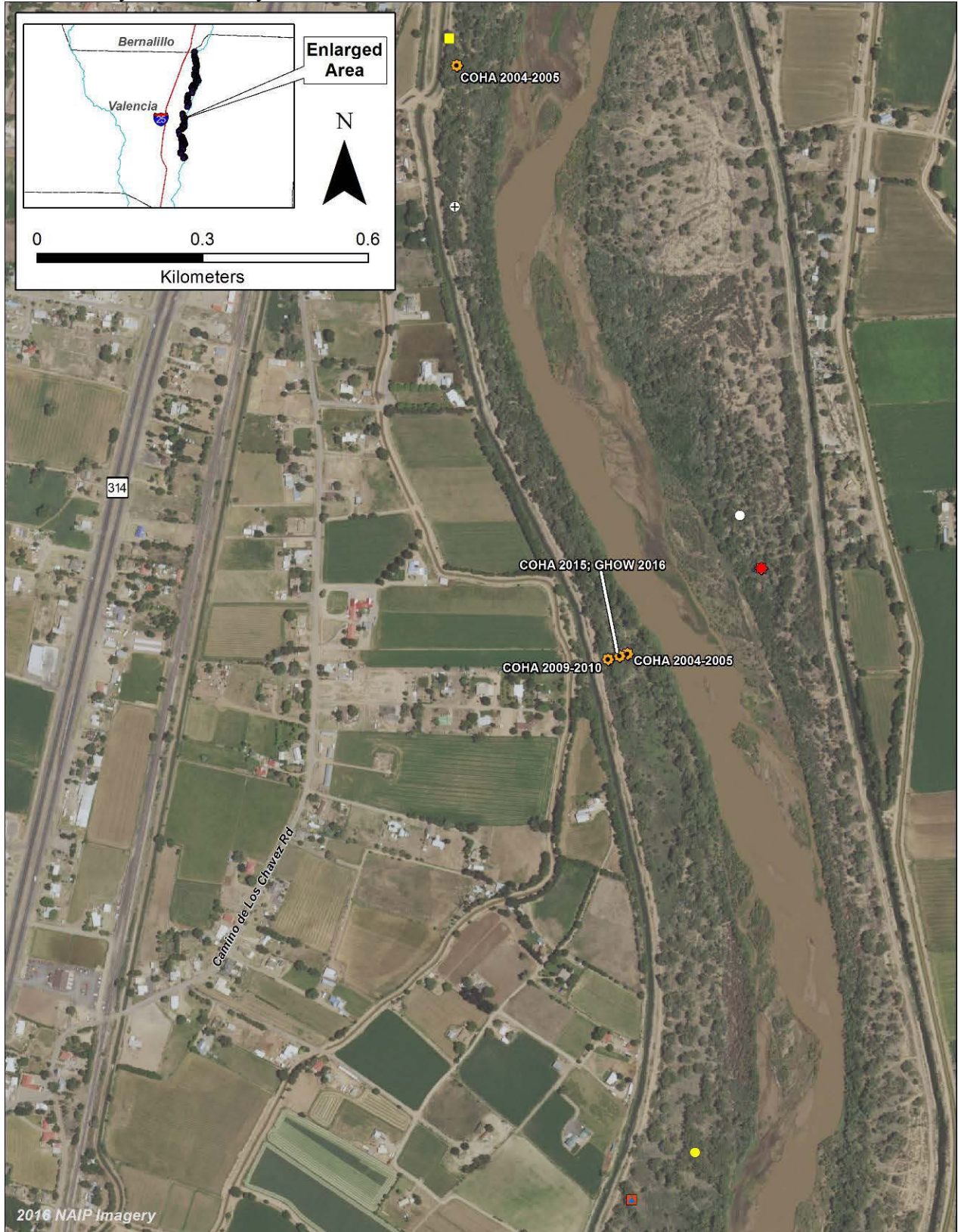


Figure 34. Map of all active raptor nests near Adelino, 2004-2016, Middle Rio Grande Conservancy District study area.

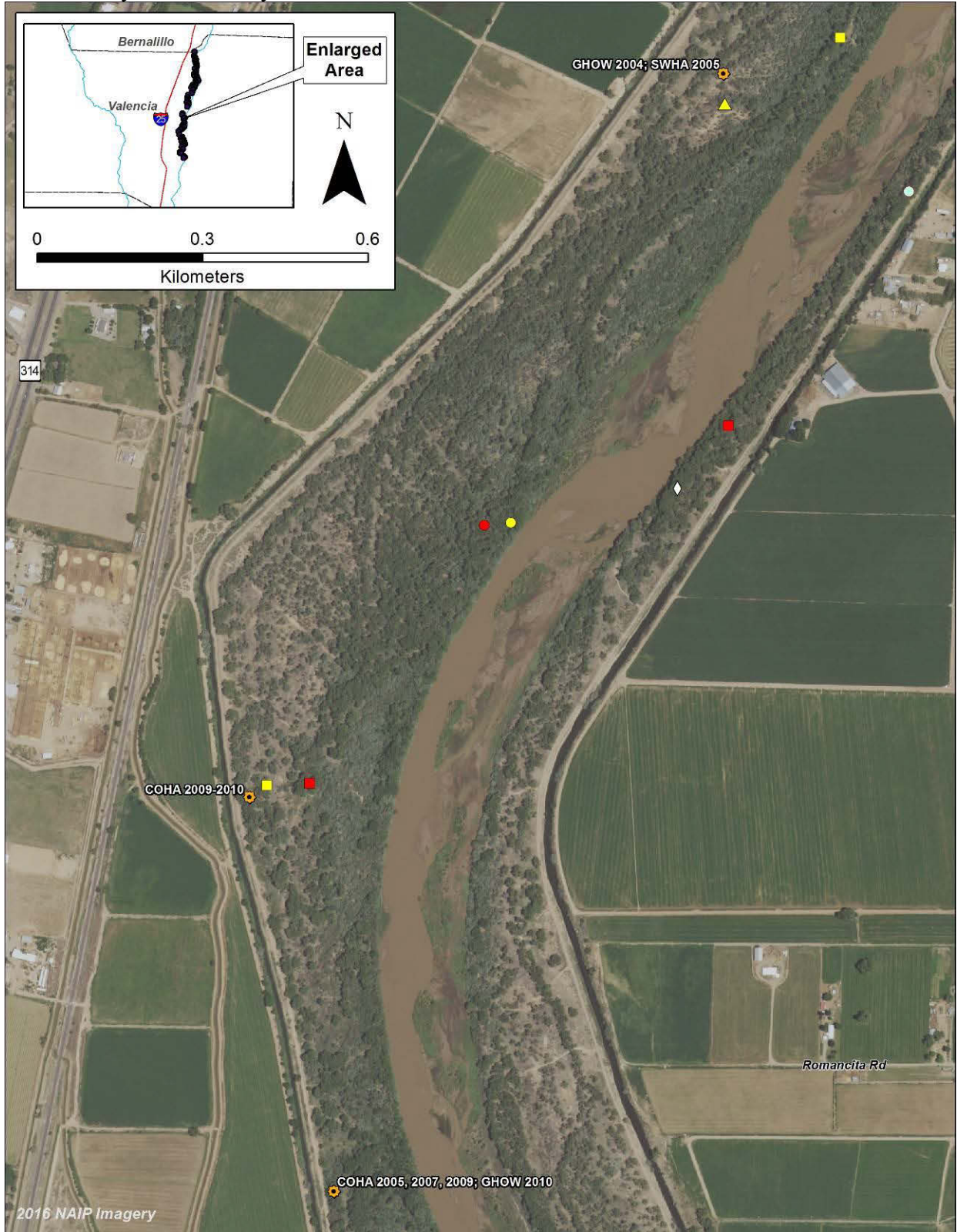




Figure 35. Map of all active raptor nests near north Belen, 2004-2016, Middle Rio Grande Conservancy District study area.

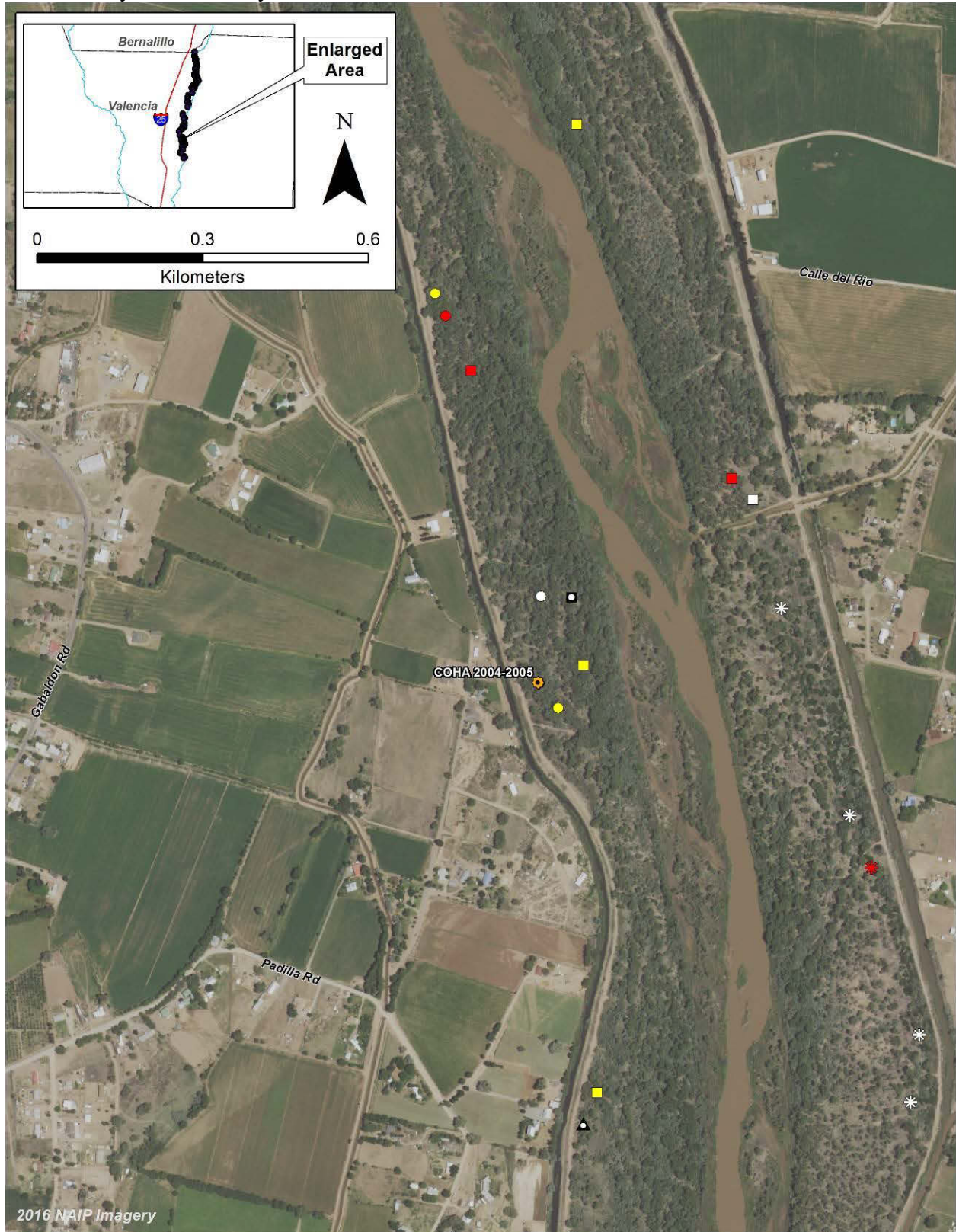


Figure 36. Map of all active raptor nests near the Whitfield Wildlife Conservation Area, 2004-2016, Middle Rio Grande Conservancy District study area.

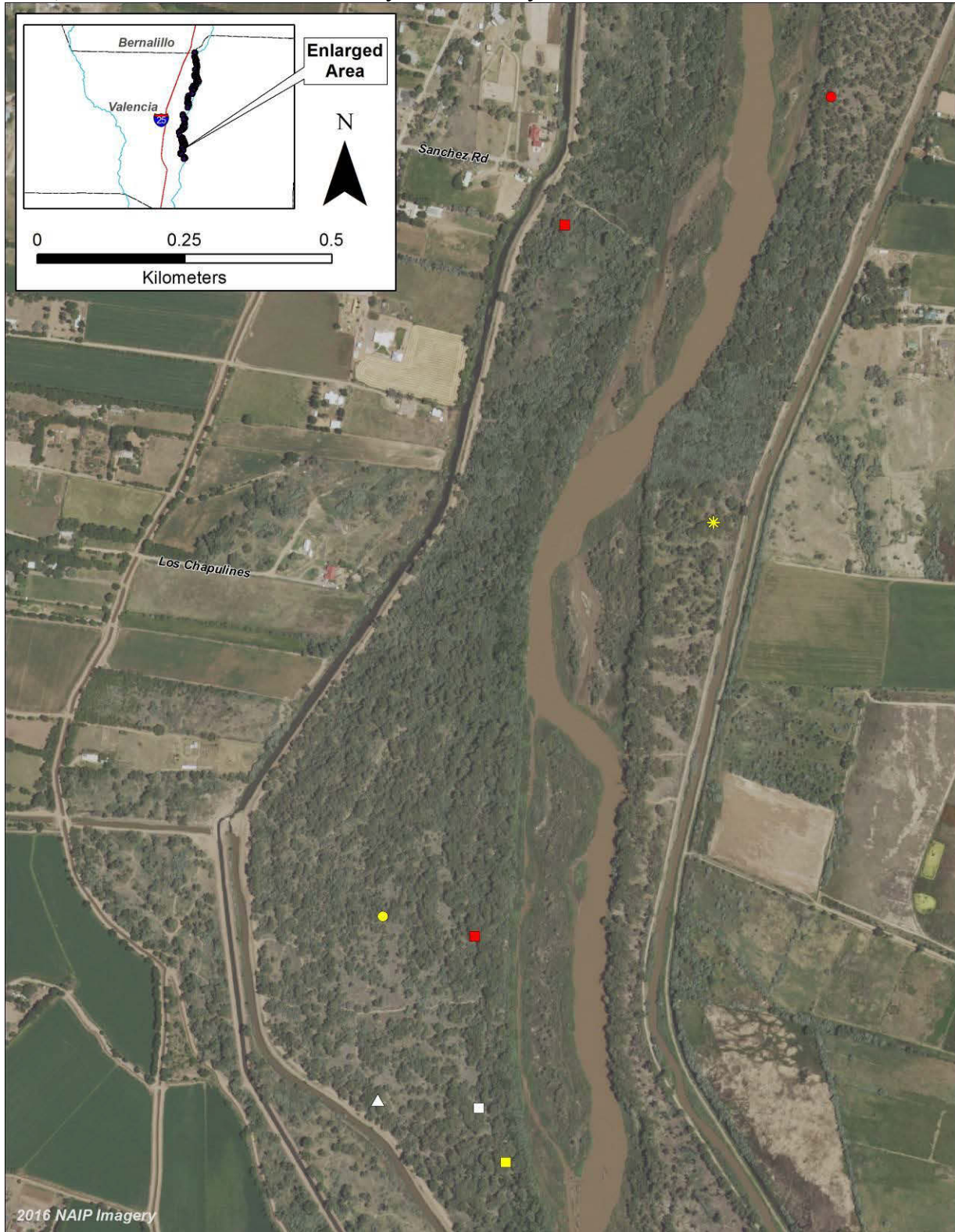


Figure 37. Map of all active raptor nests near the Belen Bridge, 2004-2016, Middle Rio Grande Conservancy District study area.

