

Figure 4. Map of all active raptor nests, 2004-2016, in the North Corrales study area.

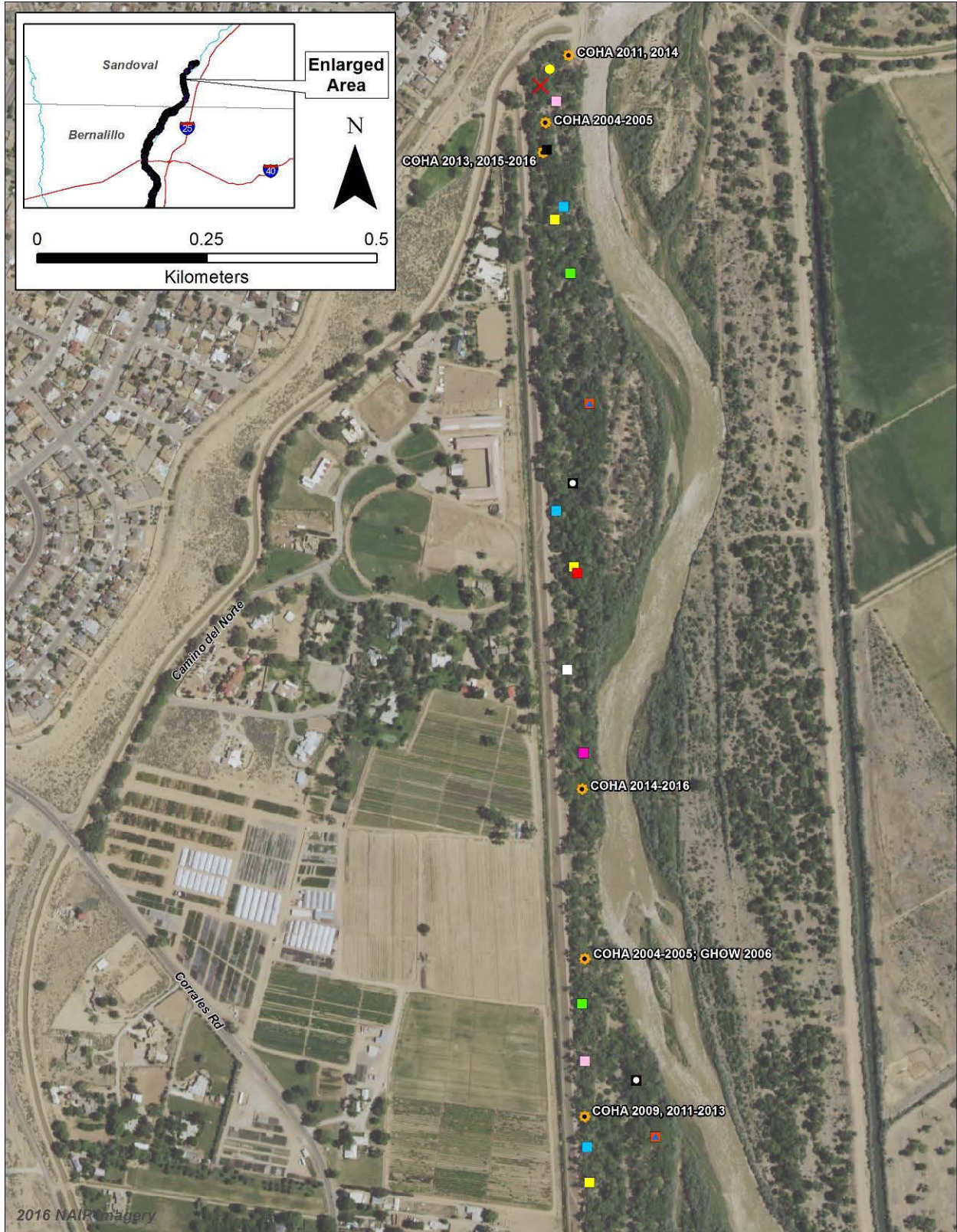




Figure 5. Map of all active raptor nests in the vicinity of Romero Road and the Harvey Jones Channel, 2004-2016, North Corrales study area.

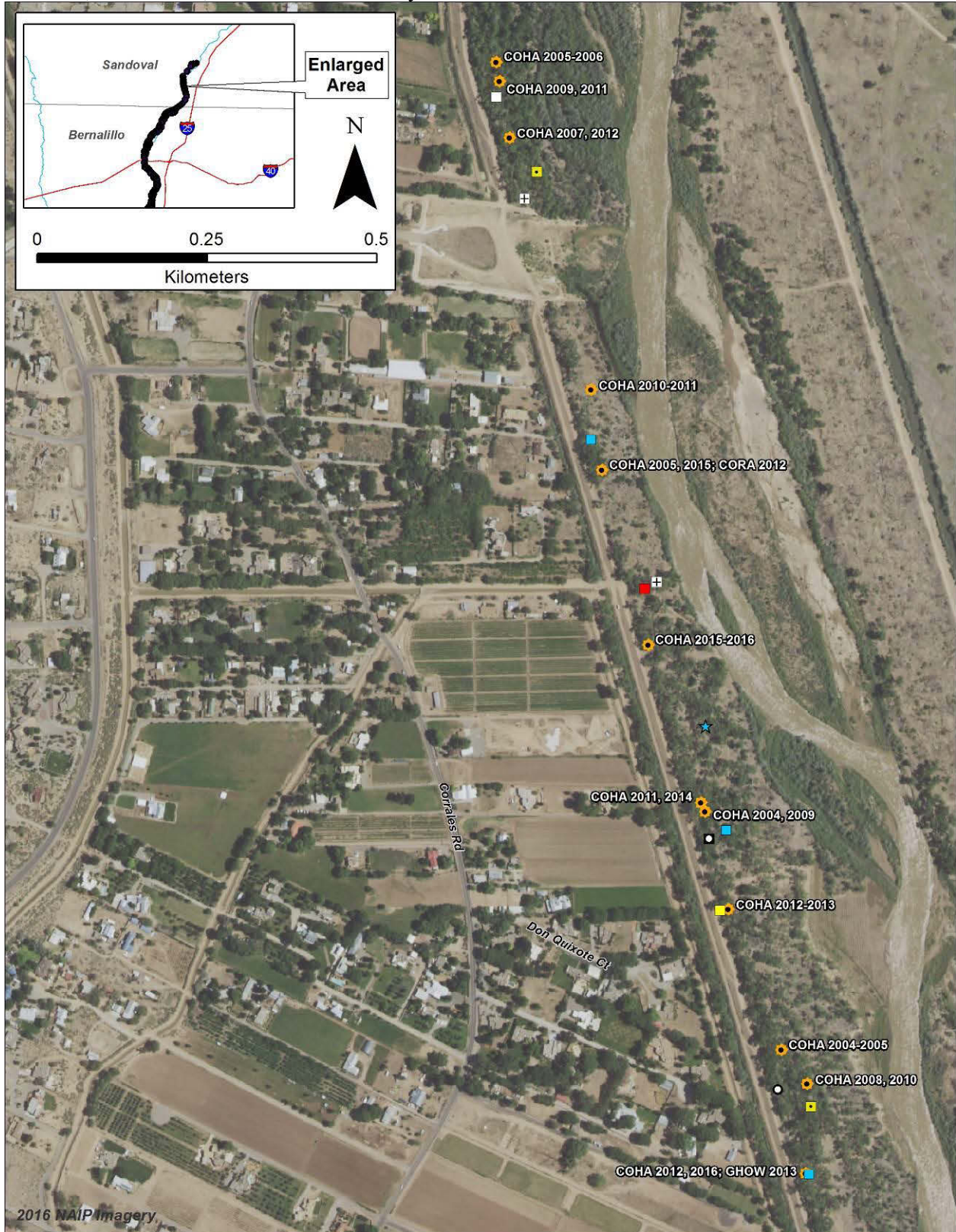




Figure 6. Map of all active raptor nests in the vicinity of Alary Lane, 2004-2016, Mid Corrales study area.

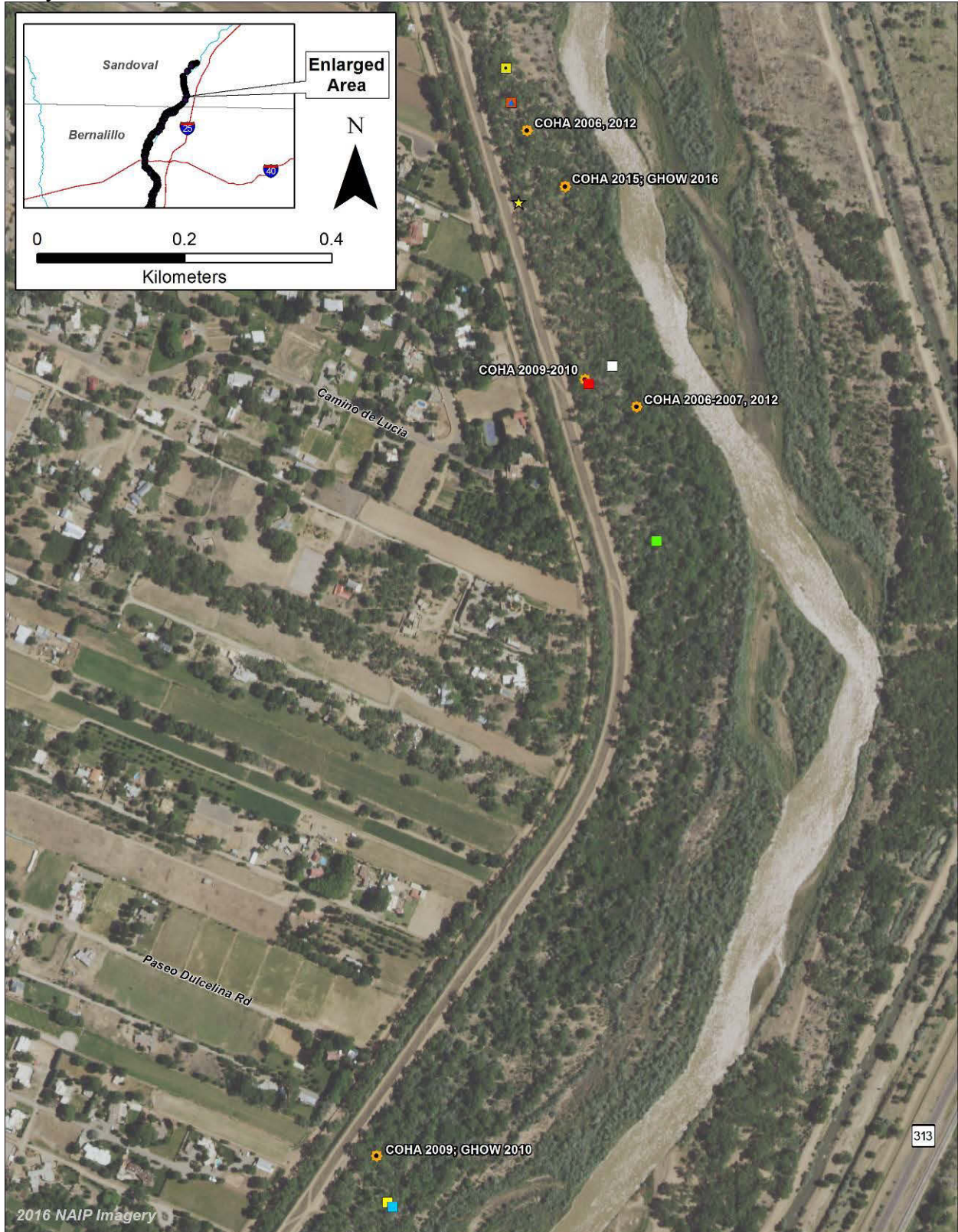




Figure 7. Map of all active raptor nests in the vicinity of East Ella Drive, 2004-2016, Mid Corrales study area.

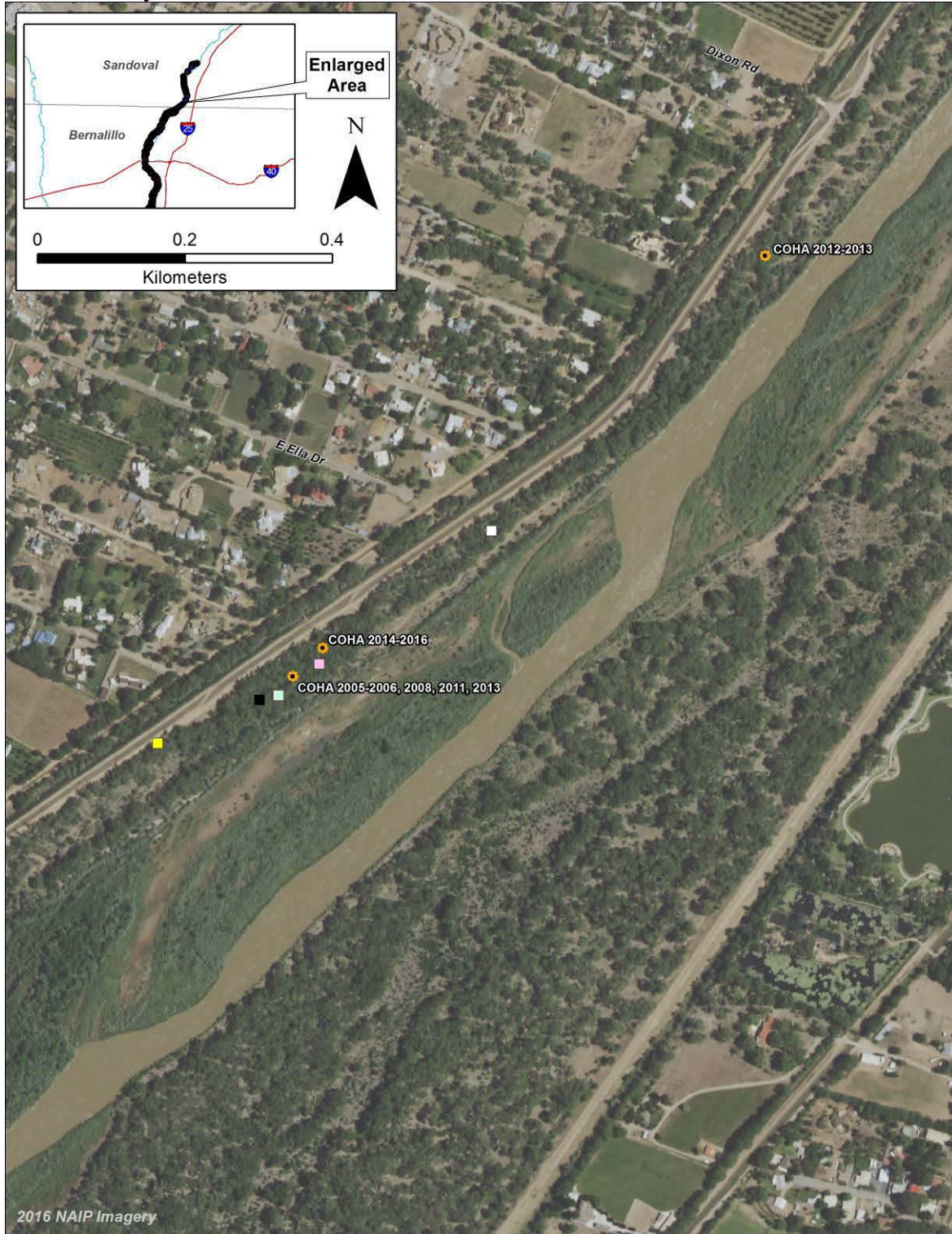




Figure 8. Map of all active raptor nests in the vicinity of Andrews Ln. and the North Diversion Channel, 2004-2016, South Corrales and the northernmost Albuquerque study areas.

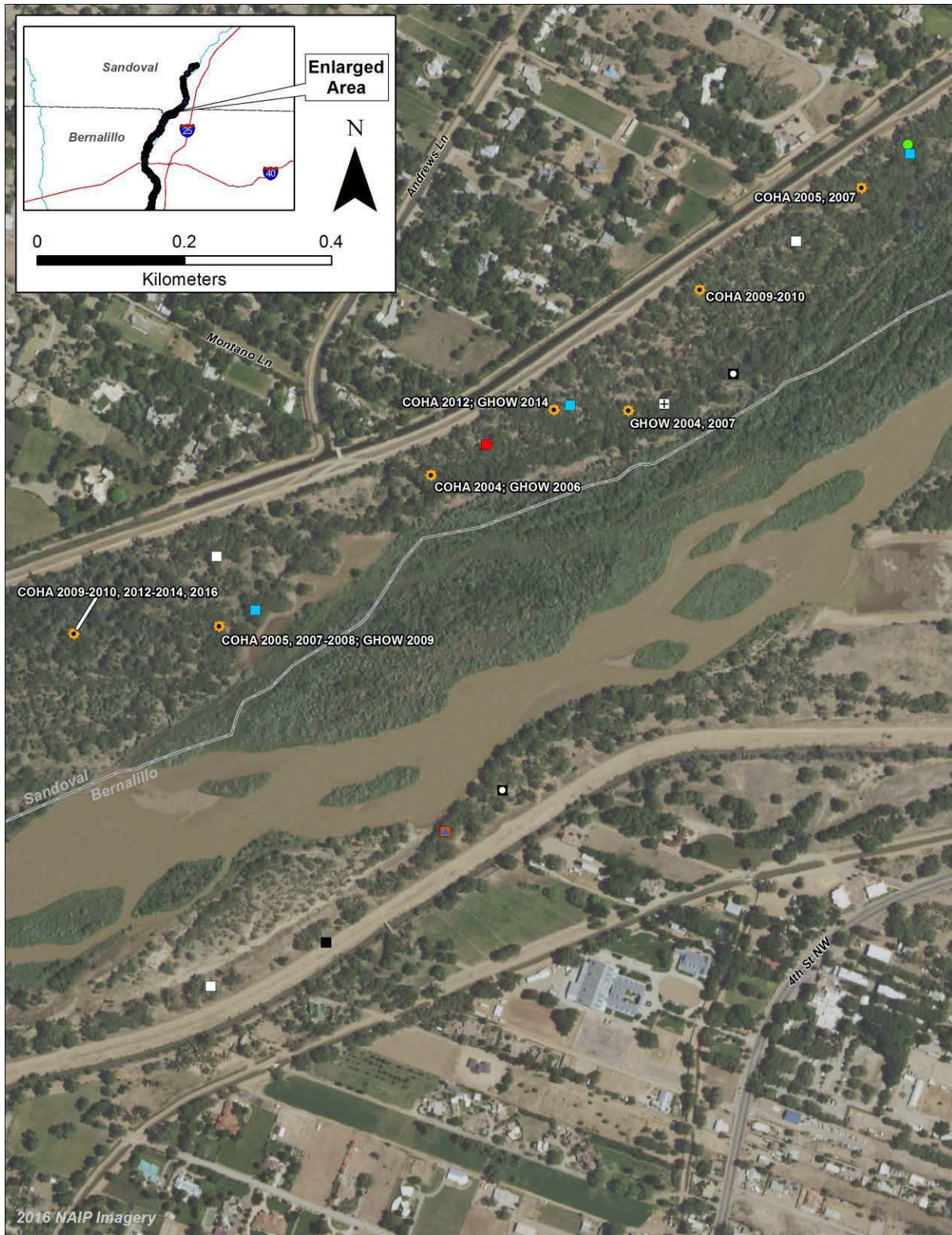




Figure 9. Map of all active raptor nests north and east of Cabezon Rd., 2004-2016, South Corrales and northernmost Albuquerque study areas.

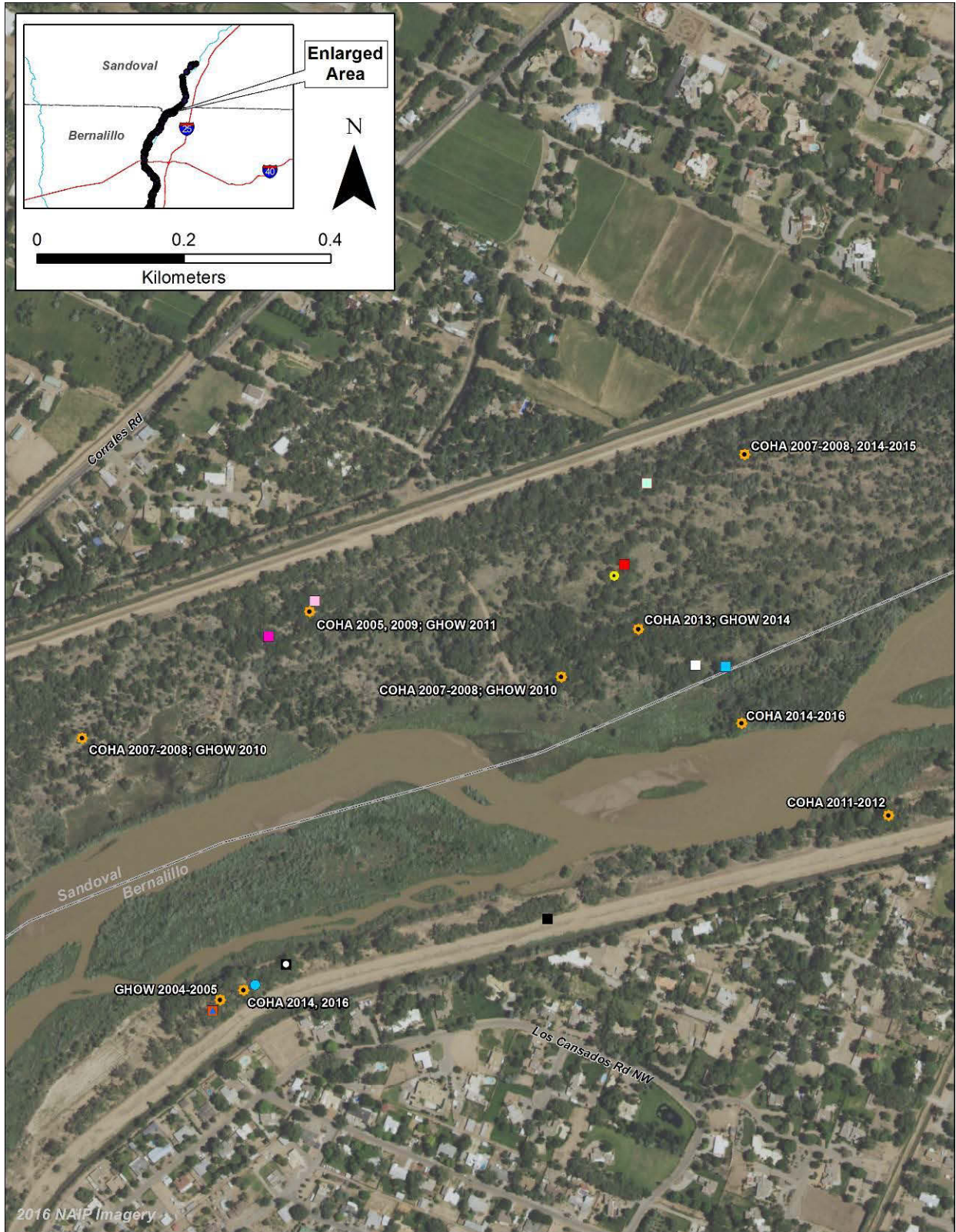




Figure 10. Map of all active raptor nests in the vicinity of Alameda Blvd., 2004-2016, South Corrales and Albuquerque study areas.

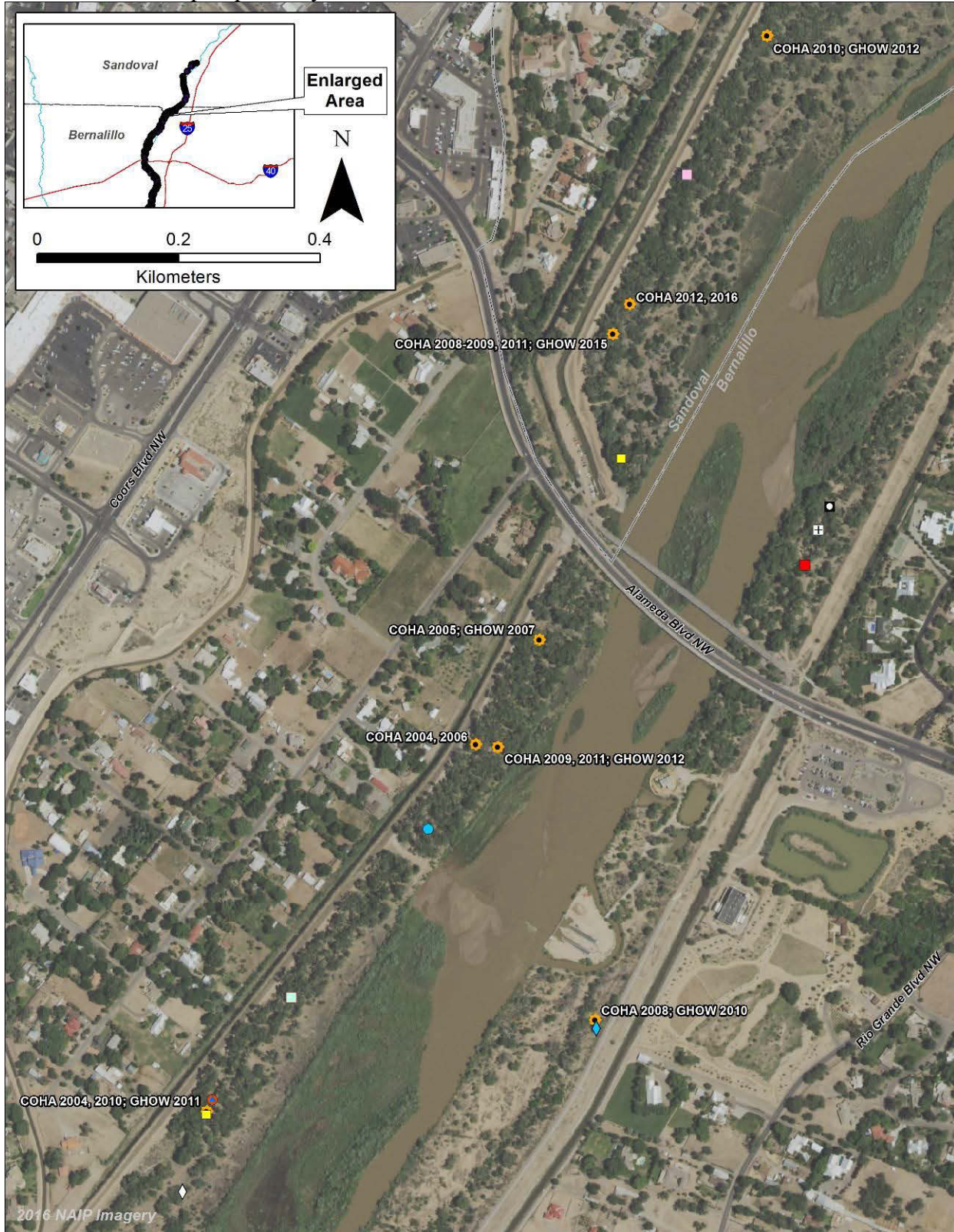




Figure 11. Map of all active raptor nests in the vicinity of Paseo del Norte, 2004-2016, Albuquerque study area.

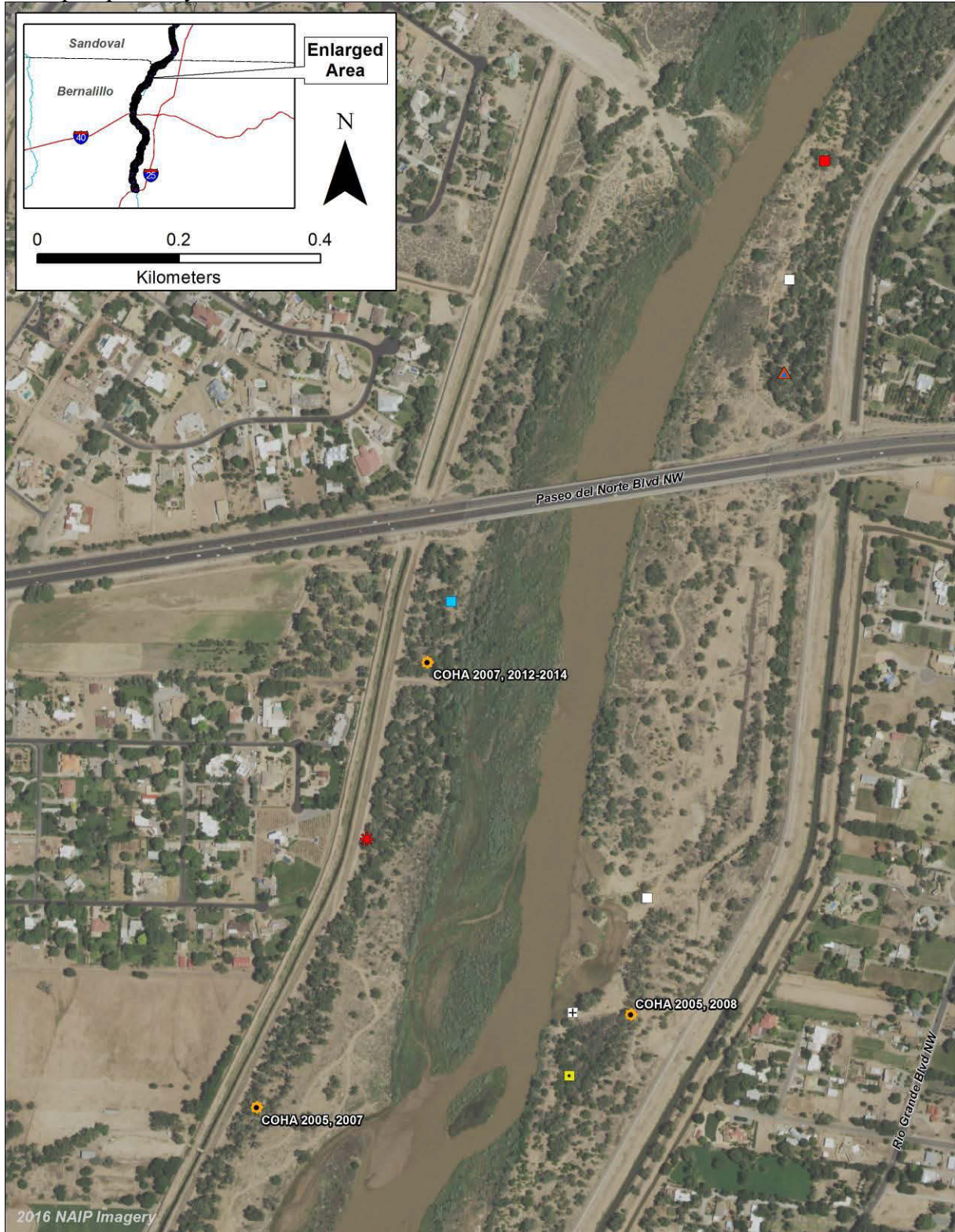




Figure 12. Map of all active raptor nests north of La Orilla Rd., 2004-2016, Albuquerque study area.

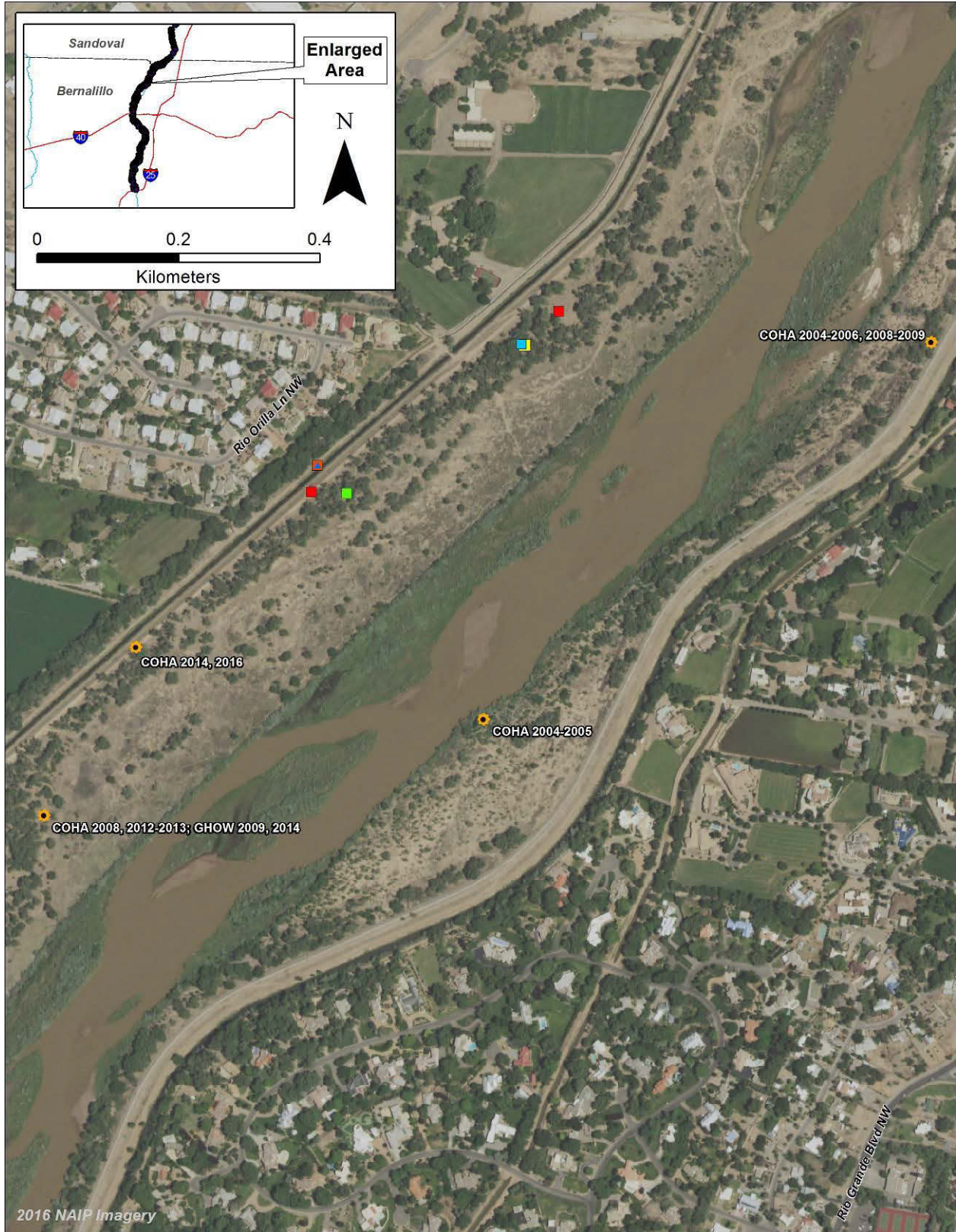




Figure 13. Map of all active raptor nests north of Montano Rd., 2004-2016, Albuquerque study area.

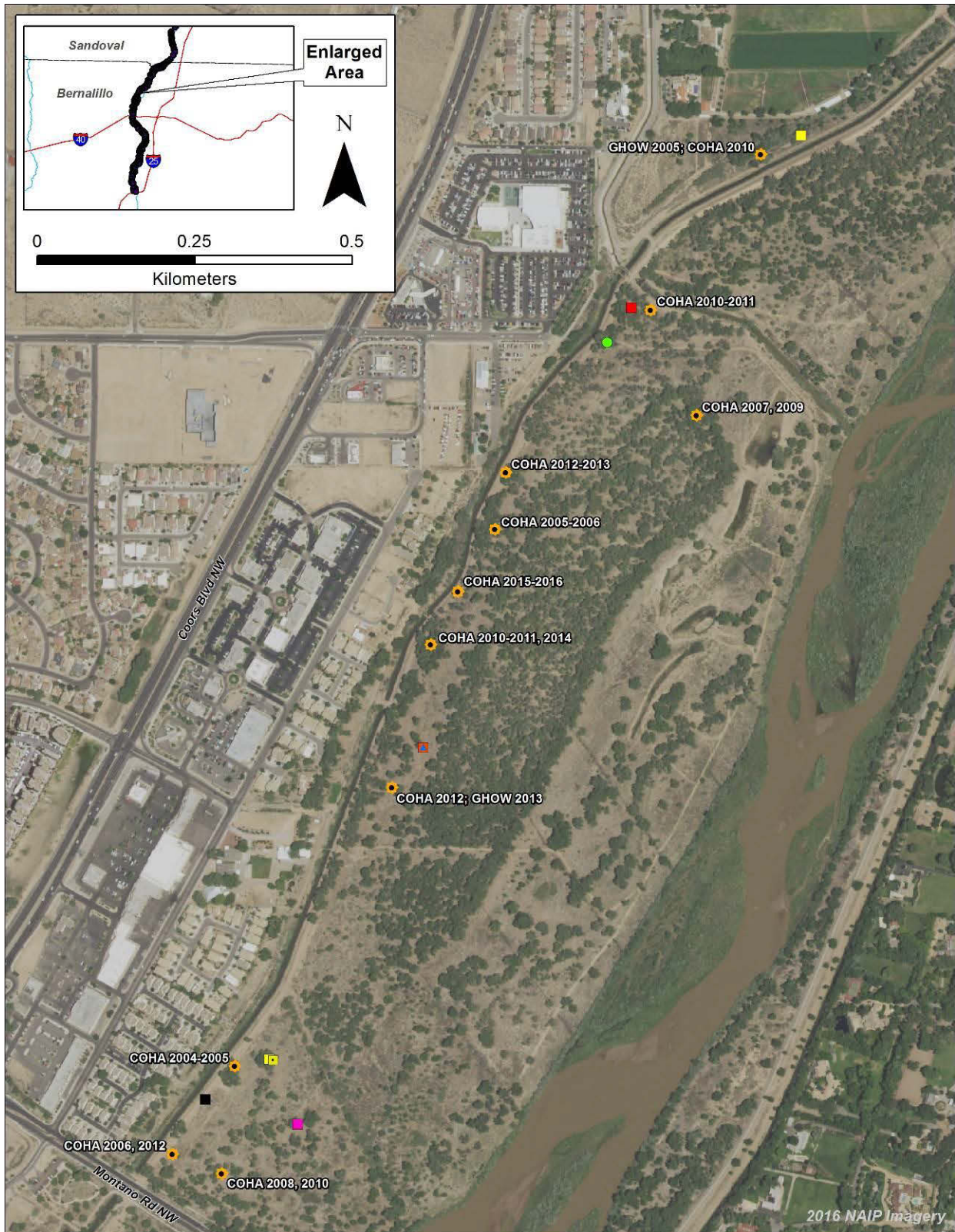




Figure 14. Map of all active raptor nests south of Montano Rd., 2004-2016, Albuquerque study area.

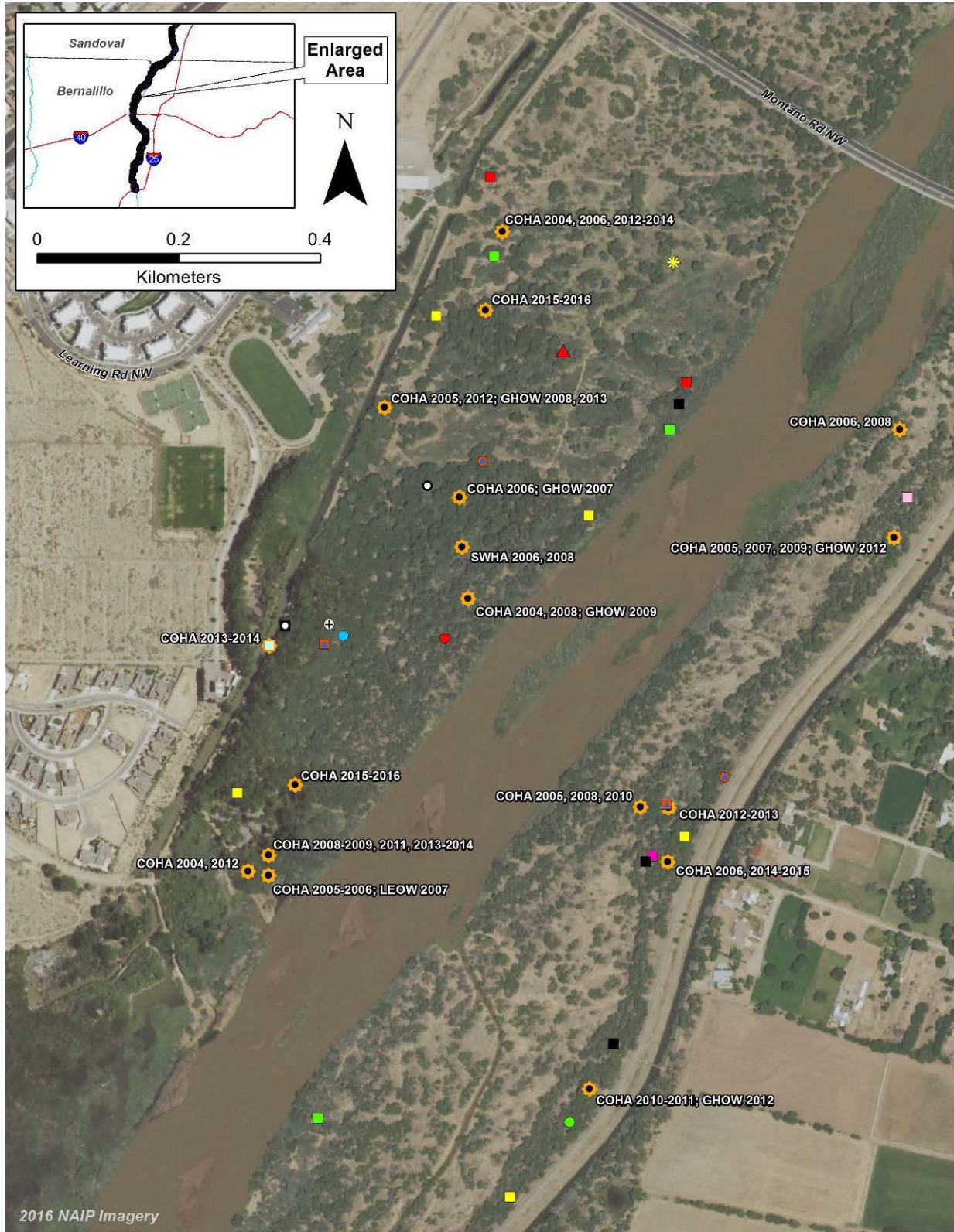




Figure 15. Map of all active raptor nests near the Rio Grande Nature Center, 2004-2016, Albuquerque study area.





Figure 16. Map of all active raptor nests in the vicinity of I-40, 2004-2016, Albuquerque study area.





Figure 17. Map of all active raptor nests in the vicinity of Central Ave., 2004-2016, Albuquerque study area.

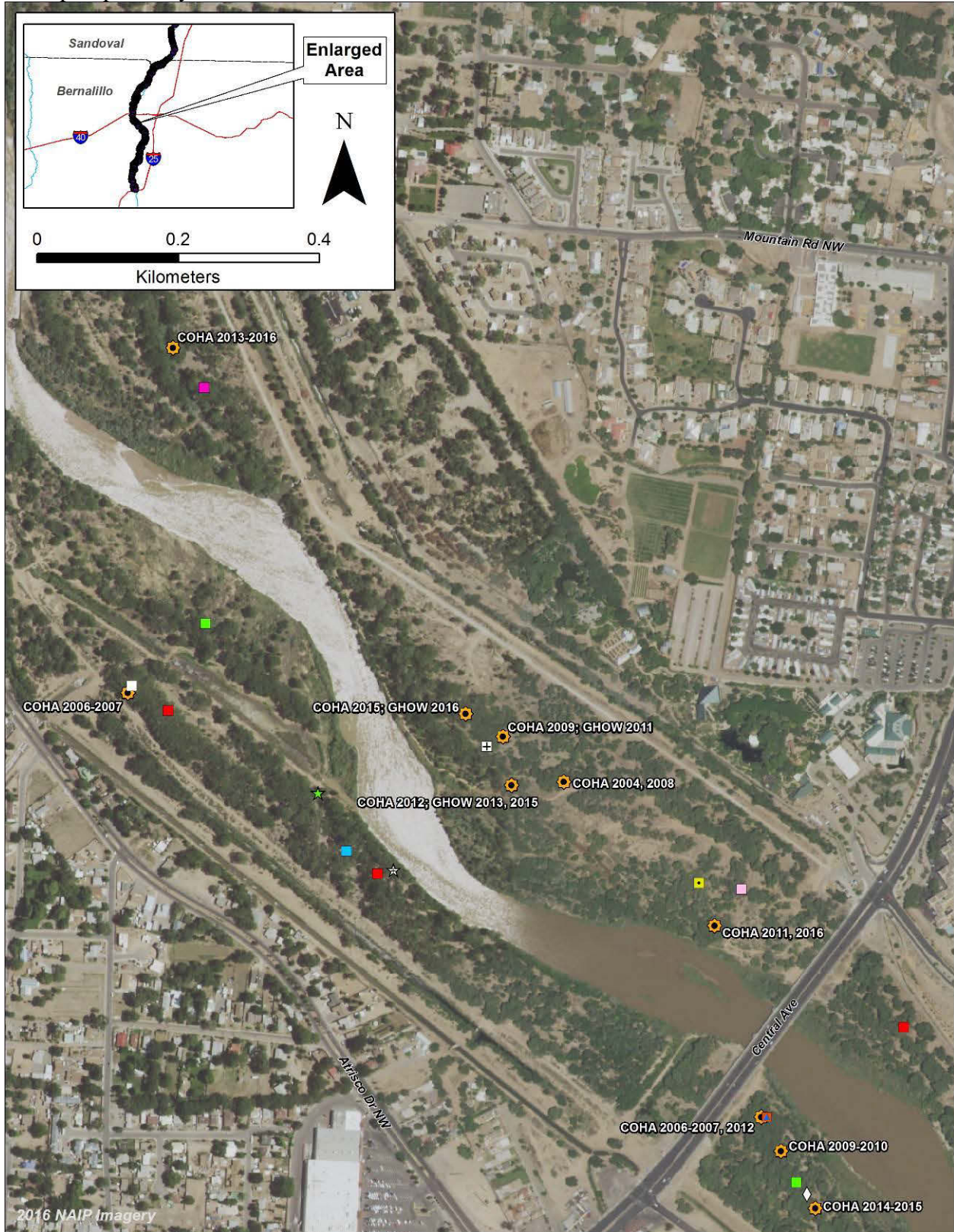




Figure 18. Map of all active raptor nests in the vicinity of Tingley Beach, 2004-2016, Albuquerque study area.

