

OPERATION RECOVERY, 1966, TOBAY BANDING STATION
 near Jones Beach, Long Island, New York
 By Frederick S. Schaeffer

1966 marked the most successful year at Tobay since Tom Davis and I started banding there in August of 1964. We were able to use our old net lanes as well as several short but very successful lanes about .9 miles west of the old lanes where the food supply is even richer than in the other areas. Since all banding is done only on weekends, with the exception of one or two days we took off from our jobs, I think you will find the summary on the following pages even more impressive.

We have undertaken a new and probably a lasting project over and beyond the regular 'OR' work. This new program is for Dr. Daniel Sonenshine and Carl Atwood of Old Dominion College. Ticks are collected live from many birds and shipped to Norfolk for further research. The author tried to examine all his birds for ticks and the other participating banders did not, because the lanes are too far apart for proper coordination. A total of 345 birds (only approx. 8% of all birds banded) were examined and from these 62 dead ticks (approx. 18%). A total of 220 ticks were removed, but we are not able to say what species they were since reports have not as yet reached me. Species of birds on which ticks were found are: Flicker, Robin, Hermit Thrush, Swainson's Thrush, Veery, Red-breasted Nuthatch, Catbird, Br. Thrasher, Starling, Yellowthroat, Chestnut-sided Warbler, Northern Waterthrush, Ovenbird, Veery, Redstart, Myrtle Warbler, Towhee, Song Sparrow, Chat, Lincoln's Sparrow, Scarlet Tanager, Savannah Sparrow and White-throated Sparrow.

On September 17, 1966, a very rare thing happened, which I did not realize until I scanned through my records at home some days later. I happened to find a banded Barn Swallow in my nets (Immature- band #56-57919) and recalling that the band number was mine, thought that it was a repeat or possibly a station return. When I checked my personal file at home, I discovered to my great surprise that this particular bird was banded on Great Neck Island, on 30 July 1966 when I was doing a Barn Swallow nesting and behavior study there for the American Museum of Natural History. On October 15, 1966, we got another foreign band, 69-145351, on an Immature Catbird, and we are eagerly awaiting word from Laurel as to who banded it.

As far as rarities are concerned, I think our best bird was the Golden-crowned Warbler, banded by Tom Davis on September 10, 1966. We also had two Orange-crowned Warblers and many others; however, since I have to conserve space for my summary, I'll have to leave it to you, the reader, to find the others.

39-48 85th Drive, Jamaica, New York 11435. (Note new address.)

(Banding summary appears on the following pages)

TOBAY BANDING STATION OPERATION RECOVERY 1966

Species	August							September						
	06	07	13	14	20	21	27	28	03	04	05	10	11	12
Green Heron					1									
Black Duck														
Marsh Hawk													1	
Pigeon Hawk														1
Clapper Rail												1		
Mourning Dove														
Bl Billed Cuckoo						1								
Saw Whet Owl														
Common Nighthawk														
R. Thr. Hummingb.											1			
Belted Kingfisher														
Yel. Sh. Flicker	1	1	1	1	1		1	1	6	4	2	1	1	
Red H. Woodpecker														
Y. B. Sapsucker														
Downy Woodpecker				1				1	1	1				
Eastern Kingbird												1		
Gr. Cr. Flycatcher					1			1						
Eastern Phoebe													1	
Y. Bellied Flycat.				7		2	4	2					5	
Traill's Flycatcher			1		2	5	9	4	2		1			1
Least Flycatcher				1	1		1	2				1	1	
E. Wood Pewee													1	
Tree Swallow	1				1	12		1	11				9	
Barn Swallow	2				1			2					2	3
Black C. Chick.												1	3	
Red Br. Nuthatch														
Brown Creeper														
House Wren														
Winter Wren														
Long B. M. Wren												1	1	
Mockingbird						1		1	1					
Catbird	1	1	5	8	4	6	2	6	7	1	2	2	8	5
Br. Thrasher			1				1	1					1	
Robin	1	1	4	1	4	2		2	4	5		1	3	1
Wood Thrush			1					1						
Hermit Thrush														
Swainson's Thrush											1	1	10	2
Gray Chkd Thrush													1	
Veery					1	4	23					1	1	
Gold. Cr. Kinglet														
Ruby Cr. Kinglet														
Cedar Waxwing								1					1	

FINAL SUMMARY

Species	September				October										Total									
	17	18	24	25	01	02	08	09	15	16	21	22	23	29		30								
Green Heron																1								
Black Duck											1					1								
Marsh Hawk																1								
Pigeon Hawk										1	1					2								
Clapper Rail																1								
Mourning Dove		1	1			1									1	4								
Bl Billed Cuckoo												1				1								
Saw Whet Owl													2			2								
Common Nighthawk								1								1								
R. Thr. Hummingb.																1								
Belted Kingfisher																1								
Yel. Sh. Flicker		5	3	7			3		12	7	8		8	5	2	4	1	87						
Red H. Woodpecker							1											1						
Y. B. Sapsucker							1		4		2		4	1				12						
Downy Woodpecker								1	1		2	2	3		6	4		32						
Eastern Kingbird																		1						
Gr. Cr. Flycatcher																		2						
Eastern Phoebe									2	1	3	1			3	1		12						
Y. Bellied Flycat.															3	1		21						
Traill's Flycatcher																		25						
Least Flycatcher																		9						
E. Wood Pewee																		1						
Tree Swallow									7	10	5	1	1	10		1	32	192						
Barn Swallow																		10						
Black C. Chick																		5						
Red Br. Nuthatch													1	3				4						
Brown Creeper										1	1		1	1	7		6	8	25					
House Wren																			1					
Winter Wren													1	1	2			2		7				
Long B. M. Wren																				2				
Mockingbird																				4				
Catbird		7	8	7					1	5	20	15	10		6	7	4			148				
Br. Thrasher										5	5	1	1	1	2	3	3		1	1	28			
Robin		2	4	12		4						3		4				11	20	1	3	3	96	
Wood Thrush																								3
Hermit Thrush													1											98
Swainson's Thrush		2	2							1	7	3	1	2	1	2	1							36
Gray Chkd Thrush		1								1		1	1					1	1					8
Veery													1											31
Gold. Cr. Kinglet													2	1	7	1		17	9		1	5		43
Ruby Cr. Kinglet		2								2	6	1	1	3			32	18			2	4		71
Cedar Waxwing		1									8	3		1		2	1		4	3		1		26

Tobay, 1966 Species	August								September							
	06	07	13	14	20	21	27	28	03	04	05	10	11	12		
Amer. Goldfinch		1														
Rufous S. Towhee	2	1		2	3	7	1	2	5		2	2	2			
Savannah Sparrow										1			2			
Sh Tailed Spar.						1					1					
Seaside Sparrow						1							1			
Vesper Sparrow																
Sl. Col. Junco																
Chipping Sparrow								1								
Field Sparrow																
White Cr Sparrow																
White Thr Spar.																
Fox Sparrow																
Lincoln's Spar.																
Swamp Sparrow																
Song Sparrow	4	6	2	11	6	14	5	9	7	2	2	5	1			
TOTAL INDIVIDUALS	34		17		59		49		111		34		137			
TOTAL NET HOURS		24		18		74		160		47		120		14		
	84		46		114		73		164		91		253			
		27		64		71		96		140		206		13		
TOTAL SPECIES	10	9	8	13	16	22	16	30	26	18	21	32	36	7		

NEW BIRDS BANDED
TOTAL SPECIES

AUGUST 507
AUGUST 40

SYNOPSIS

SEPTEMBER 922
SEPTEMBER 76

Left - Thousands of Tree Swallows -- a great many are netted.

Tobay, 1966
Species

Species	September					October					Total					
	17	18	24	25		01	02	08	09	15		16	21	22	23	29
Amer. Goldfinch	1		1													3
Rufous S. Towhee	2	4	4	3			4					2	1	2		51
Savannah Sparrow	6	7	3	3					2	1			9	4	1	39
Sh Tailed Spar.		1					1									4
Seaside Sparrow																2
Vesper Sparrow													3			3
Sl. Col. Junco								1	1	2		27	20	3	9	86
Chipping Sparrow										1			1			4
Field Sparrow									1			3	1	2		9
White Cr Sparrow									2	1	15	15	46	2	2	84
White Thr Spar.		1							9	14	25	46	51	11	6	184
Fox Sparrow									1	1		1		1	1	6
Lincoln's Spar.																1
Swamp Sparrow									2	1	11		7	10	3	54
Song Sparrow	8	8		2					2	3	7	15	16	3	5	162
TOTAL INDIVIDUALS	81		225		26		200		620		617		196		214	
TOTAL NET HOURS		76		77		59		123		7		720		200		4415
	141		180		24		118		115		90		80		71	
		88		143		45		85		3		301		124		3059
TOTAL SPECIES	31	24	31	34	20	20	29	26	26	2	30	32	18	16	20	101

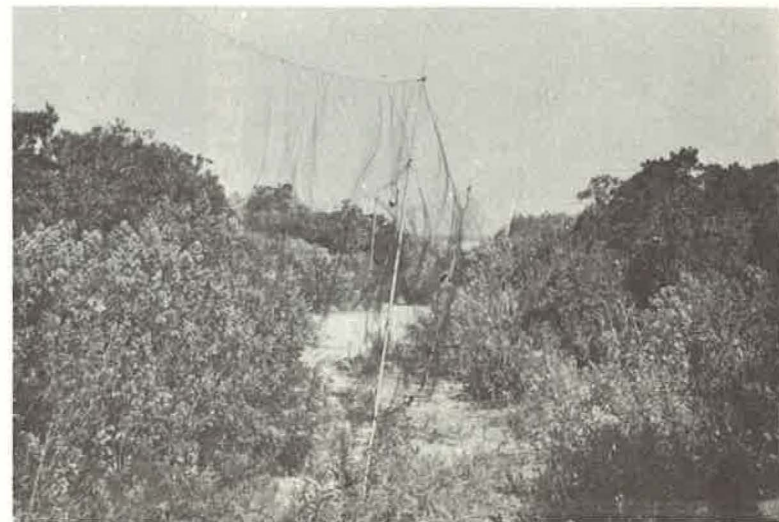
NEW BIRDS BANDED
TOTAL SPECIES

OCTOBER 2986
OCTOBER 60

SYNOPSIS

TOTAL 4415
TOTAL 101

Right - One of the net lanes - bordered by poison ivy, bayberry and high tide bushes.





At top - The author examining a Swainson's Thrush for ticks.

Right above - Immature Red-headed Woodpecker - an encouragement on a rainy day.

Left above - A Myrtle Warbler -- our most numerous migrant.