

TWO TRAPS

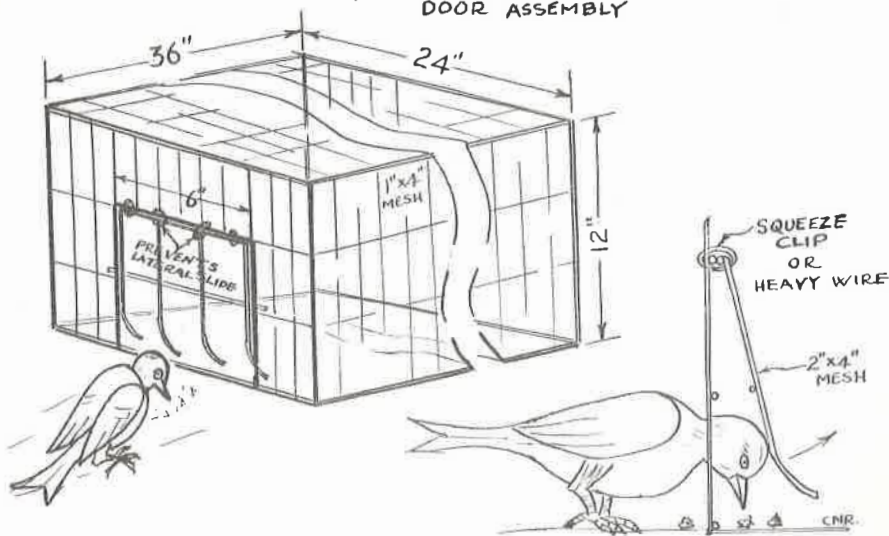
Designed by C. Howard Channing
 Drawings by Christopher N. Rose

Howard Channing sent EBBA News a number of traps, and writes:
 "I recently purchased a copy of your Workshop Manual Vol. 2, and while it is rich in trapping ideas I believe I can give you much valuable addenda for it. I am mailing you a box with some complete traps in it and some models. I do this because I draw very poorly and am not overly good at explaining things. Consider this as a gift to EBBA. . . .I build all of them myself but I am not - repeat am not in the trap making and selling business, though I am delighted to correspond with anyone at any time to assist them in solving any particular trapping problem."

Mr. Channing's address is Box 666, Clear Lake, Washington.

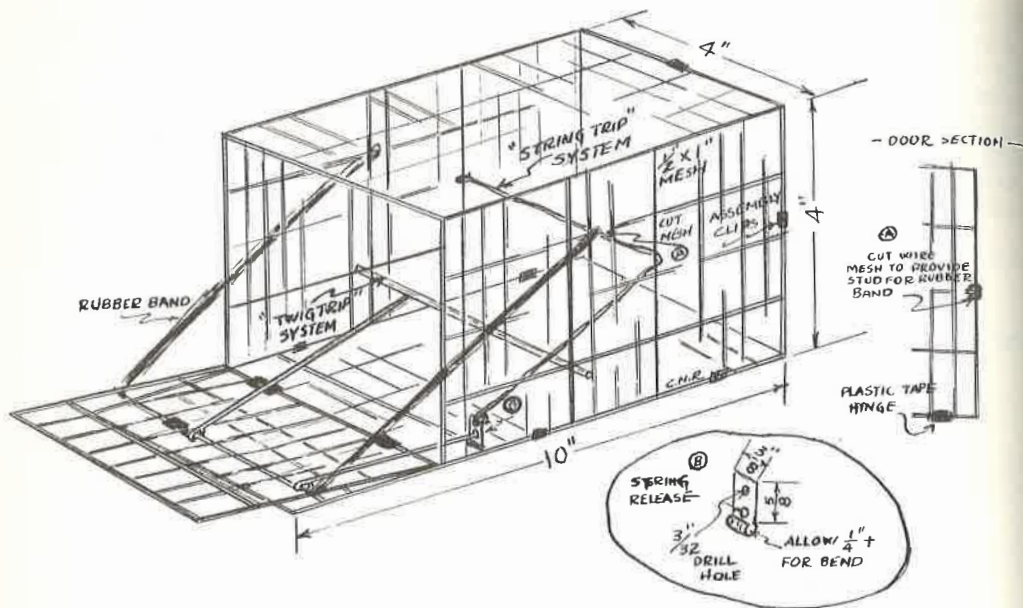
Two of Mr. Channing's traps - Game Keeper's Trap and Snap Trap, are shown in this issue. Others will appear in succeeding issues.

- GAME KEEPERS TRAP -
 DOOR ASSEMBLY



Trap should be 24" x 36" x 12" deep. 1" x 2" wire frame for entrance hole cut in end of trap. Bent grid wires face with bend into trap. Birds go readily in to bait. For larger gallinaceous birds (pheasant and grouse) increase entrance to 8" x 12" and make larger swinging door. Used very successfully here on band tails and feral pigeons. Should work for E.B.B.A. folks on grouse, bobwhite, etc. If two inch grids are large for mourning doves, reduce to 1½".

-SNAP TRAP-



The Snap Trap is a very adaptable trap for many species. This size 4" x 4" x 8" is fine for sparrows, juncos, towhees, etc. To operate, depress door and place twig across trap where two threads are tied. Place trigger wire under twig and trap is set. Bird hopping on twig operates trap. Use two bands for towhees, sparrows, blackbirds, etc. Remove one band for juncos and chickadees. Use trap 5" x 5" x 15" for thrushes, robins, etc. For flickers use trap 6" x 6" x 18". Remove trigger wire and move to right hand side. Take piece of sheet galvanized $\frac{1}{2}$ x 1" - roll one end over and drill to holes in other end. Place rolled end over wire on bottom of trap where thread is tied. Squeeze rolled end shut with pliers. Cut trigger wire till it just reaches bottom hole when flange is in upright position. Place thread in top hole and tie - run along outside of trap down about 10" then through center of trap for flicker to bump into and tie on other side of trap. Wire trap to tree with entrance down. Use extra bands or heavier as needed for size of bird. Run wire through trap near top and impale a piece of suet on it on inside.

This trap can be used for mammals by including a locking device on top. In larger sizes use rat trap (single or double spring) for motive power. In trap 12" x 12" x 36" I have taken dogs, cats, coons, skunk, possum, etc. Cold weather devitalizes rubber bands. Light weight springs can be substituted in such a case.